



Bramham Gardens, SW5

£1,846 Per week

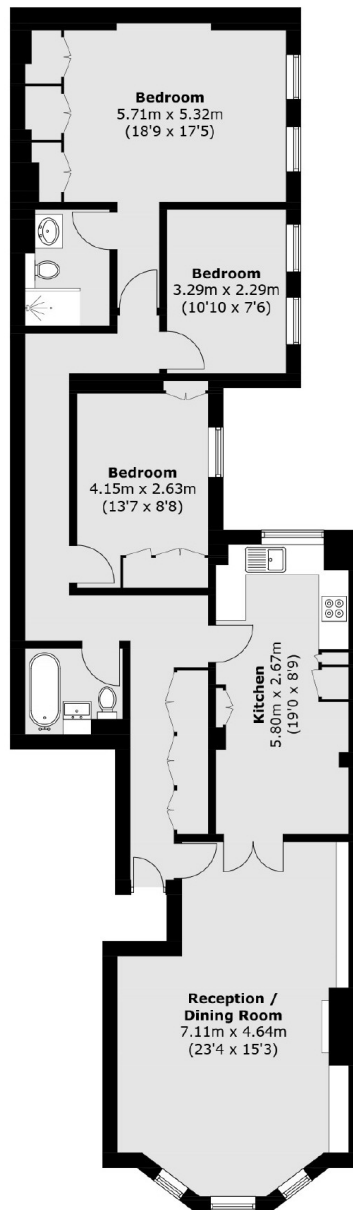
A stunning three bedroom flat on the raised ground floor of a well-maintained period building overlooking the sought after Bramham Gardens. The property benefits from plenty of built in storage and high ceilings throughout.

Close to both Earls Court and Gloucester Road with a wide choice of shops and restaurants including a M&S supermarket. Earls Court is the nearest underground station

Features

- Three Bedrooms
- Two Bathrooms
- High Ceilings
- Built In Storage
- Period Building
- Bramham Gardens

Bramham Gardens, London, SW5



Ground Floor

Total area (approx.): 111.9 sq. m (1,204.5 sq. ft)

Dexters

Earl's Court
3 Hogarth Place
London
SW5 0QT
Lettings
020 7370 3030

Energy Rating: . We aim to make our particulars both accurate and reliable. However they are not guaranteed; nor do they form part of an offer or contract. If you require clarification on any points then please contact us, especially if you're traveling some distance to view. Please note that appliances and heating systems have not been tested and therefore no warranties can be given as to their good working order.

 **RICS** | Regulated
Estate Agent
and Letting Agent

[dexters.co.uk](https://www.dexters.co.uk)