

Earls Court Gardens, SW5

£380 Per week

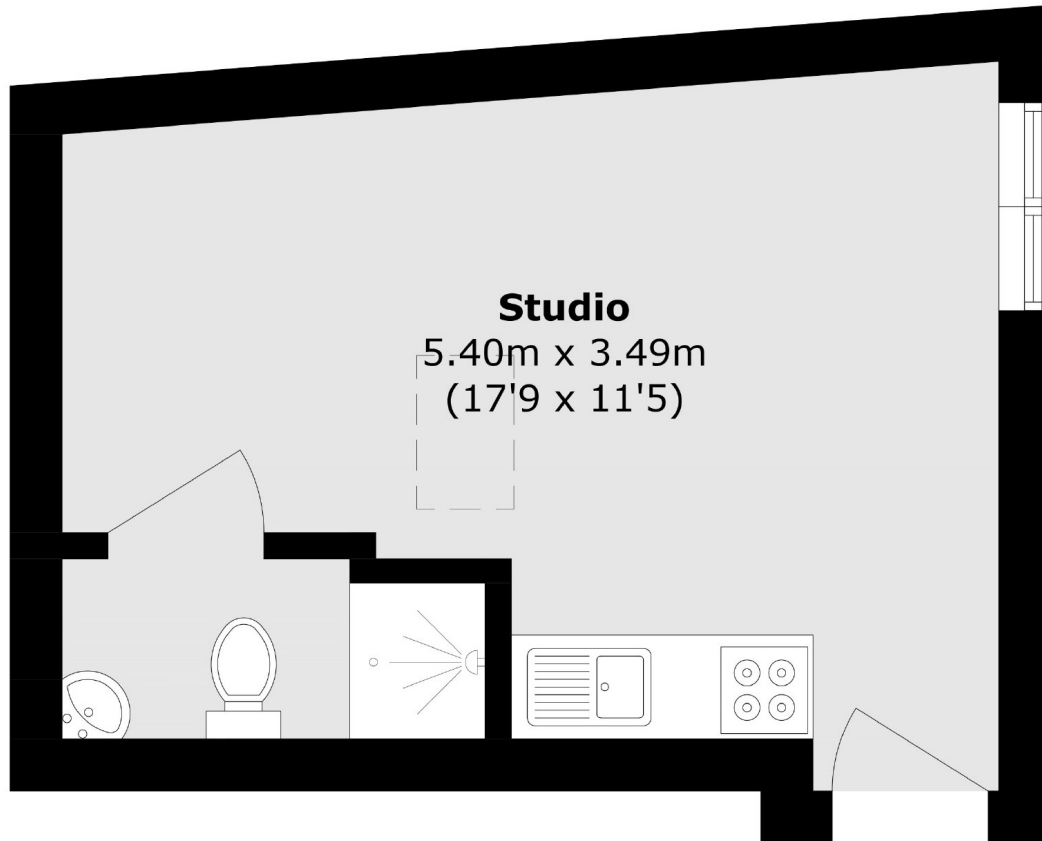
A spacious self contained studio flat situated in a period conversion with wood flooring throughout and an open plan kitchen.

A residential road in what could only be described as the ideal location. The buzz of the High Street as well as the tube station are on your doorstep.

Features

Open Plan Kitchen
Furnished
Wood Floors Throughout
Lower Ground
Self Contained
Centrally Located

Earls Court Gardens,
London, SW5



Basement

Total area (approx.): 20.2 sq. m (217.4 sq. ft)