



## Cromwell Road, SW5

£646 Per week

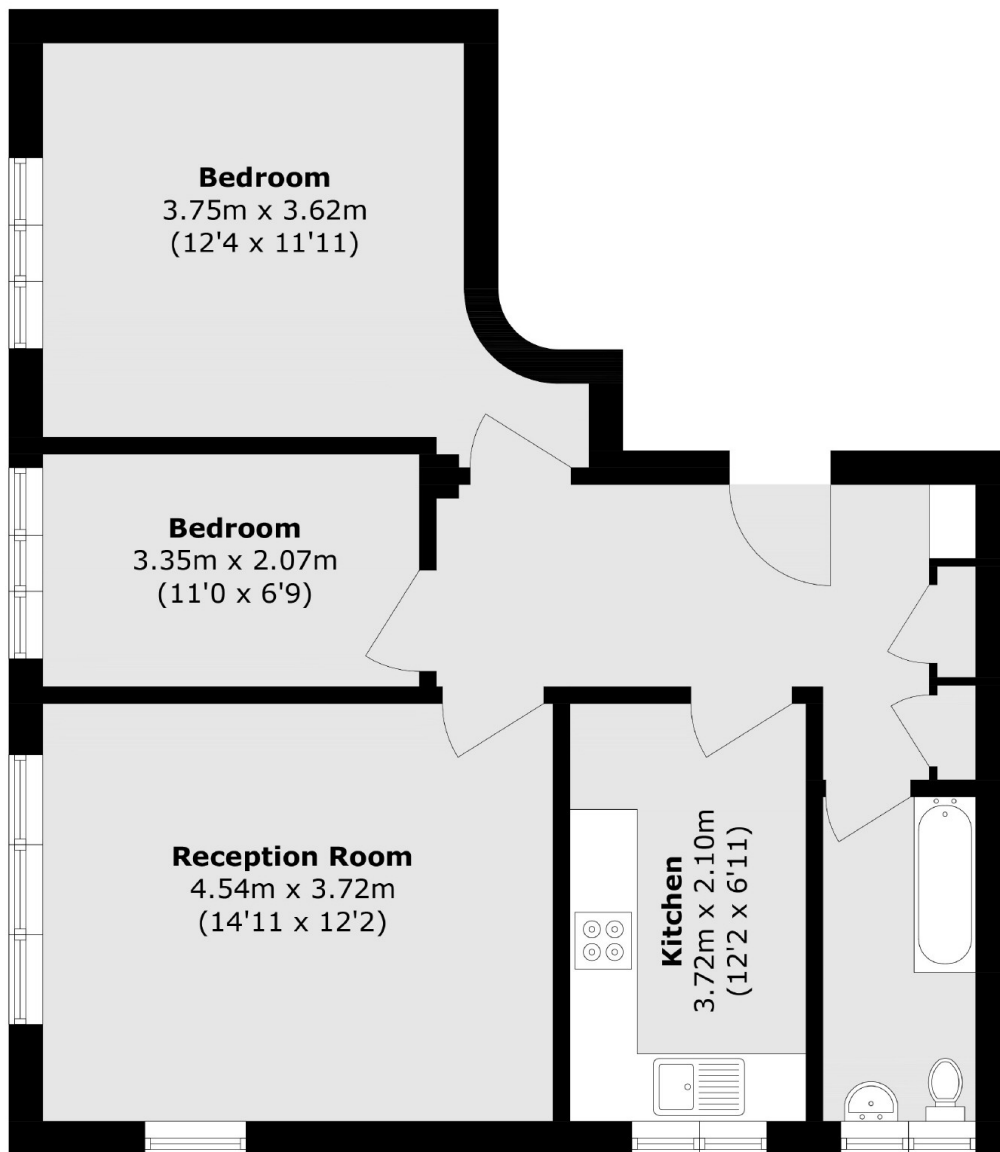
A spacious and bright two bedroom flat situated in this stunning mansions block with lift access. The flat benefits from a large reception room, separate kitchen and natural light throughout.

The property is a short distance to both Gloucester Road and Earls Court with a wide choice of Shops and cafés and bars, including Earl's Court station only 0.2 miles away.

### Features

- Two Bedrooms
- One Bathroom
- Separate Kitchen
- Wooden Floors
- Lift
- Natural Light

Cromwell Road,  
London, SW5



Total area (approx.): 62.9 sq. m (677.0 sq. ft)

**Dexters**

Earl's Court  
3 Hogarth Place  
London  
SW5 0QT  
Lettings  
020 7370 3030

Energy Rating: . We aim to make our particulars both accurate and reliable. However they are not guaranteed; nor do they form part of an offer or contract. If you require clarification on any points then please contact us, especially if you're traveling some distance to view. Please note that appliances and heating systems have not been tested and therefore no warranties can be given as to their good working order.

 **RICS** | Regulated  
Estate Agent  
and Letting Agent

[dexters.co.uk](https://www.dexters.co.uk)