

Longridge Road, SW5

£634 Per week

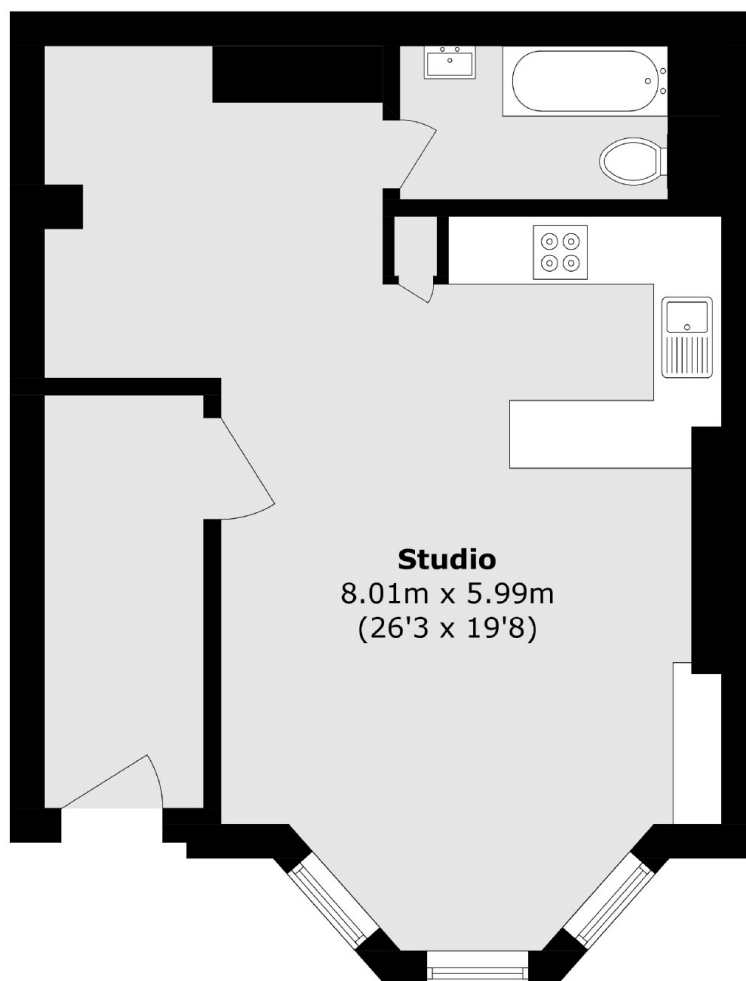
A brand newly refurbished flat which has been finished to the highest of standards. The flat is situated on the raised ground floor with its own private entrance, high ceilings and wooden flooring throughout.

Longridge Road is well situated moments from the amenities of Old Brompton Road and Earls Court and within easy reach of the shops, bars and restaurants of Kensington High Street. Earls Court tube is located 0.1 miles away.

Features

- Studio
- One Bedroom
- Brand New Refurbishment
- Wooden Floors
- High Ceilings
- Private Entrance

Longridge Road,
London, SW5



Total area (approx.): 43.5 sq. m (468.2 sq. ft)

Dexters

Earl's Court
3 Hogarth Place
London
SW5 0QT
Lettings
020 7370 3030

Energy Rating: . We aim to make our particulars both accurate and reliable. However they are not guaranteed; nor do they form part of an offer or contract. If you require clarification on any points then please contact us, especially if you're traveling some distance to view. Please note that appliances and heating systems have not been tested and therefore no warranties can be given as to their good working order.

 **RICS** | Regulated
Estate Agent
and Letting Agent

[dexters.co.uk](https://www.dexters.co.uk)