



Nevern Square, SW5

£1,384 Per week

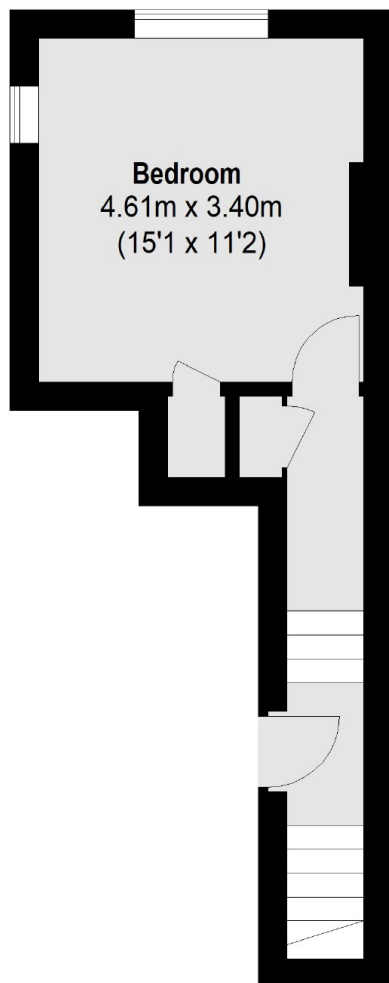
A stunning newly refurbished three bedroom property located in the popular Nevern Square in Earls Court. The flat is finished to a high standard and comprises of a large reception, recently refurbished kitchen and two modern bathrooms.

Nevern Square is a well-regarded garden square situated off Earls Court Road. Nevern Square enjoys a peaceful and secluded setting, away from the lively atmosphere of Earls Court Road. In terms of transportation, the property is conveniently positioned 0.2 miles from Earls Court tube station, which serves the District and Piccadilly lines, and 0.4 miles from West Brompton station, which serves the District and Overground lines.

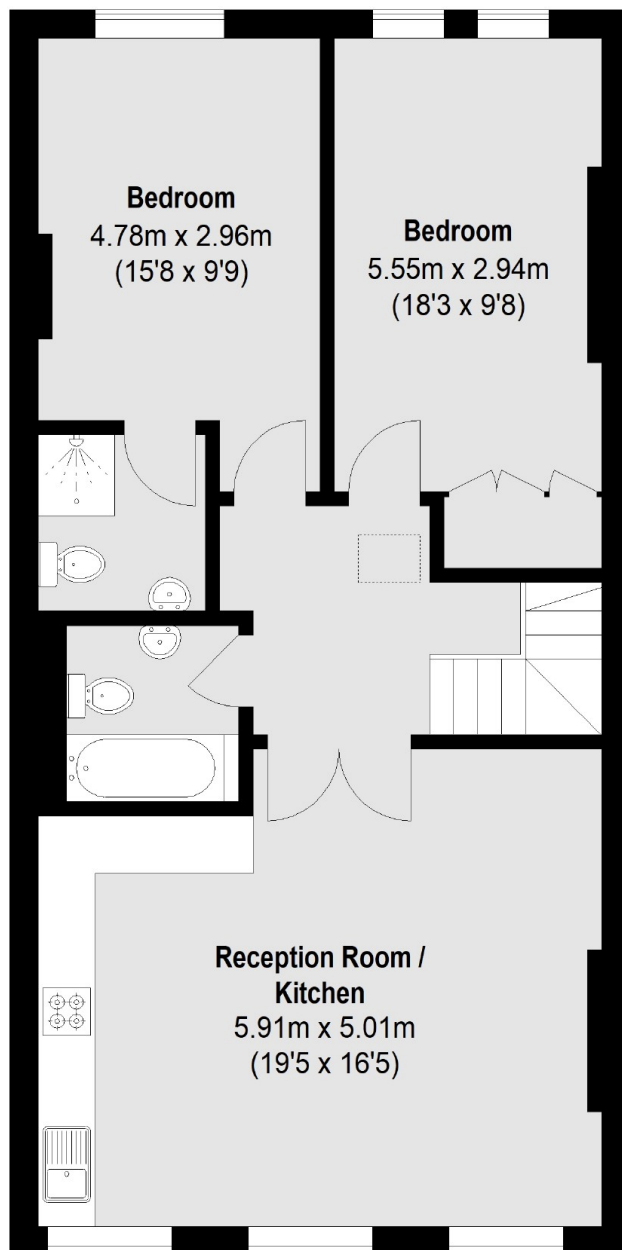
Features

- Three Double Bedrooms
- Two Bathrooms
- Newly Refurbished
- Open Plan Kitchen
- Close to Amenities
- Excellent Transport

Nevern Square, London, SW5



Third Floor



Fourth Floor

Total area (approx.): 91.95 sq. m (990 Sq. ft)

Dexters

Earl's Court
3 Hogarth Place
London
SW5 0QT
Lettings
020 7370 3030

Energy Rating: D. We aim to make our particulars both accurate and reliable. However they are not guaranteed; nor do they form part of an offer or contract. If you require clarification on any points then please contact us, especially if you're traveling some distance to view. Please note that appliances and heating systems have not been tested and therefore no warranties can be given as to their good working order.

 **RICS** | Regulated
Estate Agent
and Letting Agent

dexters.co.uk