



Longridge Road, SW5

£692 Per week

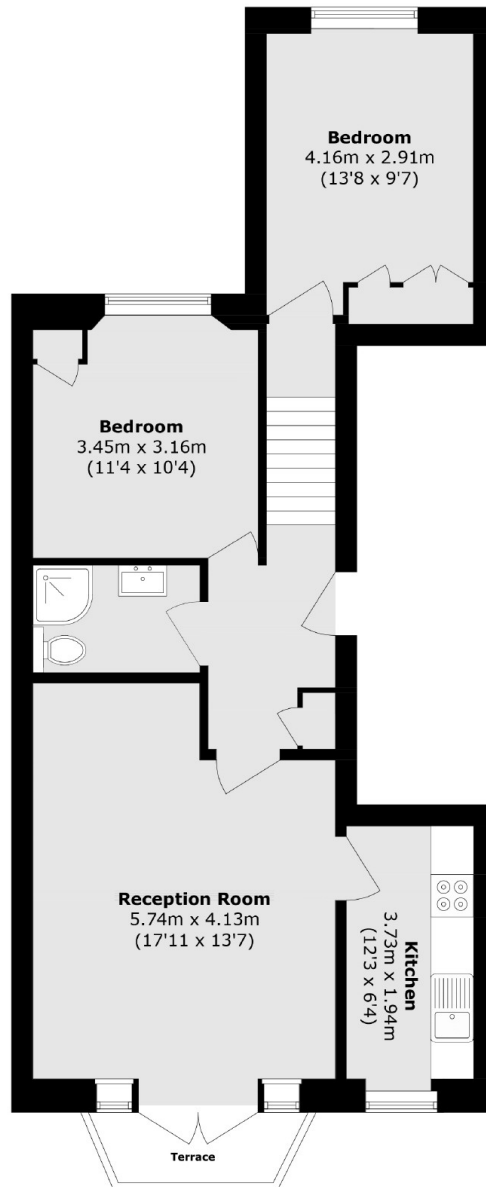
A bright and spacious two double bedroom apartment on the second floor of a beautiful period conversion with wooden floors and a bright reception room. The flat has floor to ceiling windows and natural light throughout.

Located only 0.25 miles to the rear entrance of Earls Court tube station, this property is ideal for easy access to central London and all the local shops and restaurants of Earls Court.

Features

- Two Double Bedrooms
- One Bathroom
- Separate Kitchen
- Period Conversion
- High Ceilings
- Close to Transport

Longridge Road, London, SW5



Total area (approx.): 65.7 sq. m (707.1 sq. ft)

Terrace area (approx.): 2.6 sq. m (27.9sq. ft)