



## Lexham Gardens, W8

£775 Per week

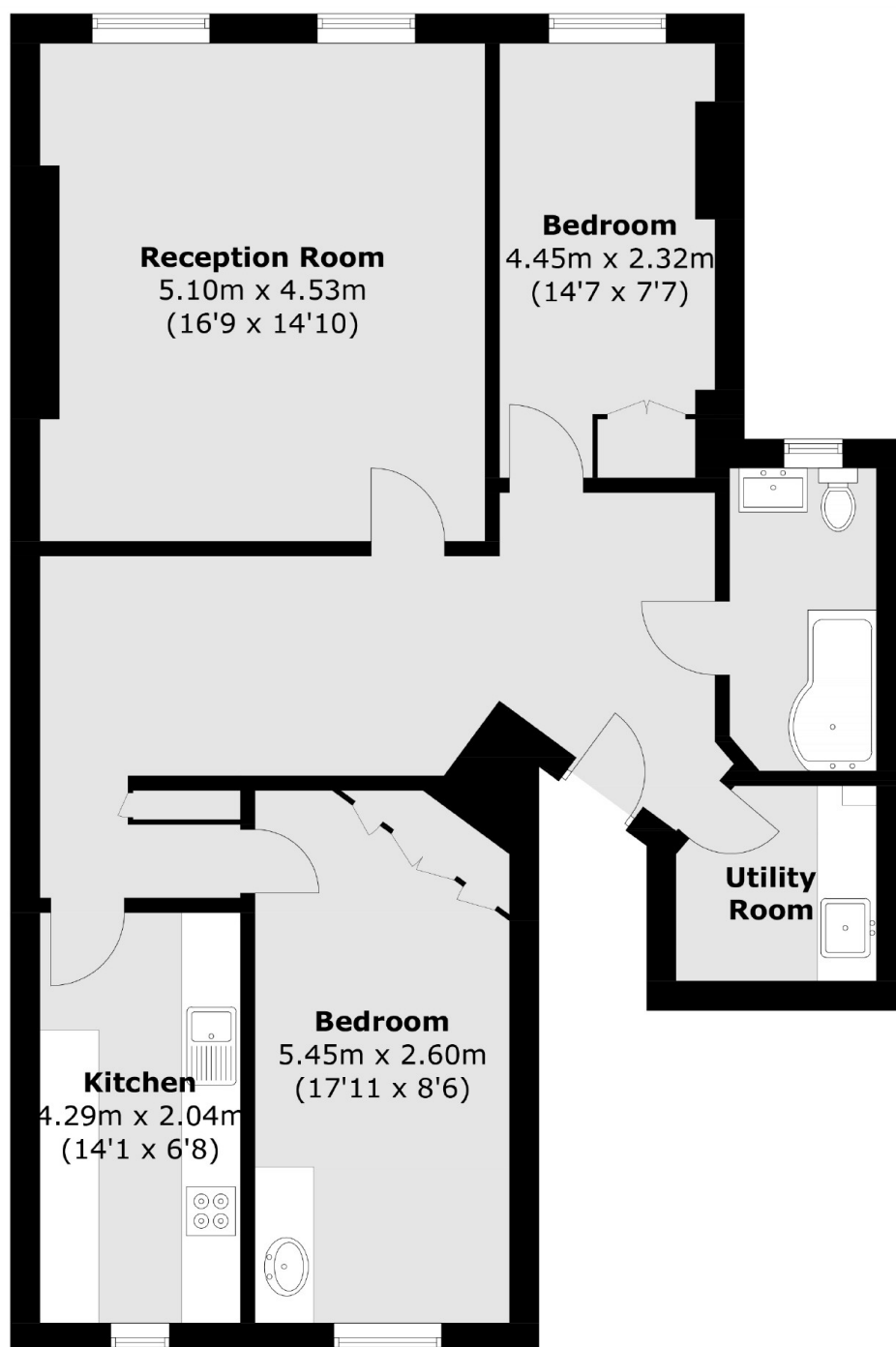
A large two double bedroom apartment based on the second floor of a period conversion. You also have a separate kitchen and a storage room for extra space.

Lexham Gardens is located between Gloucester Road and Kensington High Street with a wide choice of shops and restaurants including Waitrose, Starbucks and Marks and Spencer's.

### Features

- Two Double Bedrooms
- Separate Kitchen
- Wood Flooring
- Built-in Storage
- Period Conversion
- Close to Amenities

# Lexham Gardens, London, W8



Total area (approx.): 87.4 sq. m (940.7 sq. ft)

## Dexters

Earl's Court  
3 Hogarth Place  
London  
SW5 0QT  
Lettings  
020 7370 3030

Energy Rating: D. We aim to make our particulars both accurate and reliable. However they are not guaranteed; nor do they form part of an offer or contract. If you require clarification on any points then please contact us, especially if you're traveling some distance to view. Please note that appliances and heating systems have not been tested and therefore no warranties can be given as to their good working order.

 **RICS** | Regulated  
Estate Agent  
and Letting Agent

[dexters.co.uk](https://www.dexters.co.uk)