



Warwick Road, W14

£484 Per week

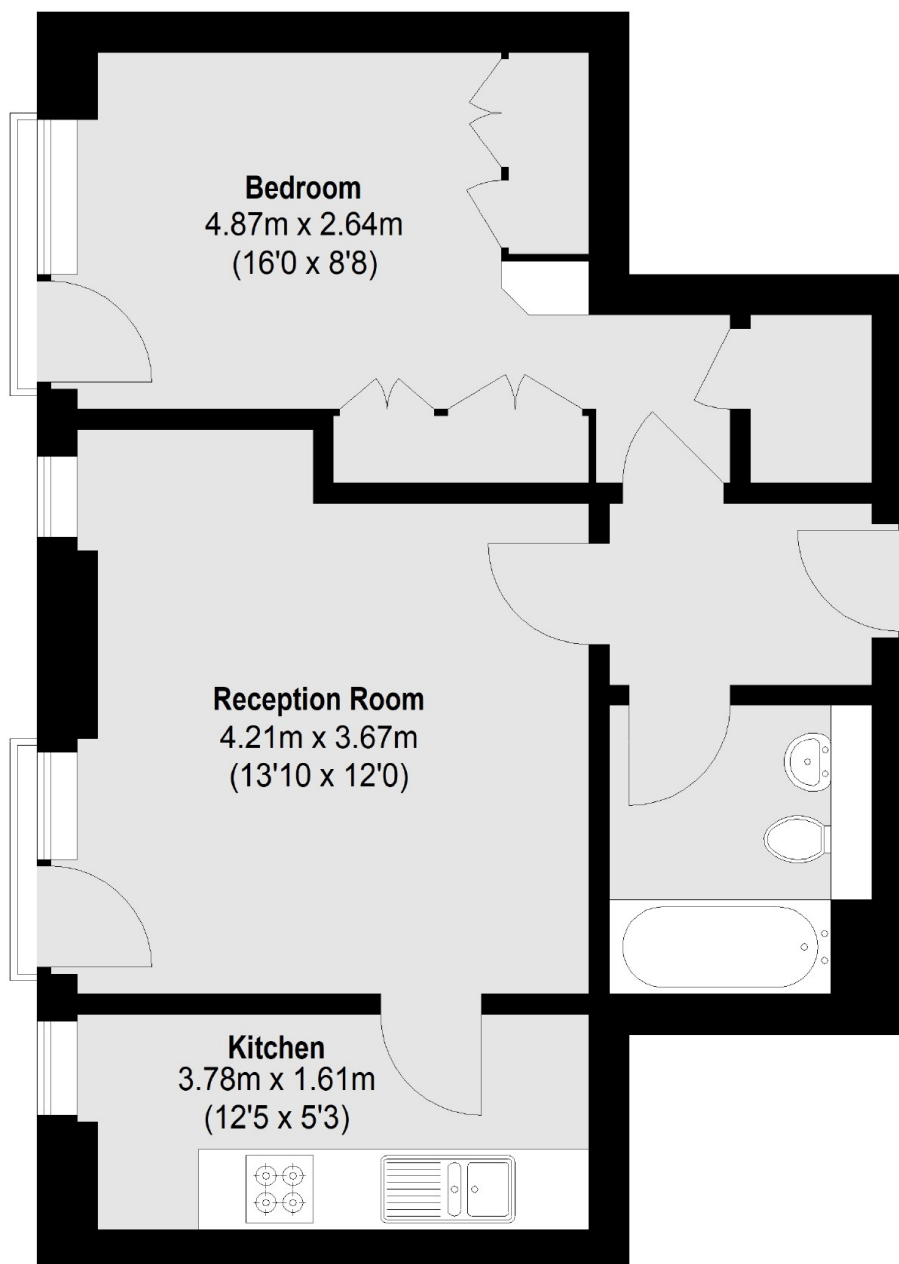
This bright and spacious one bedroom apartment is situated on the second floor of this popular development, with wood flooring throughout and access to the communal garden.

The property is located between High Street Kensington and Earls Court, with the nearest tube station being 0.3 miles away (Piccadilly and District lines).

Features

- One Double Bedroom
- Two Juliet Balconies
- Wooden Flooring
- Separate Kitchen
- Built-In Storage
- Communal Gardens

Warwick Road,
London, W14



Total area (approx.): 44.36 sq. m (477 Sq. ft)

Dexters

Earl's Court
3 Hogarth Place
London
SW5 0QT
Lettings
020 7370 3030

Energy Rating: B. We aim to make our particulars both accurate and reliable. However they are not guaranteed; nor do they form part of an offer or contract. If you require clarification on any points then please contact us, especially if you're traveling some distance to view. Please note that appliances and heating systems have not been tested and therefore no warranties can be given as to their good working order.

 **RICS** | Regulated
Estate Agent
and Letting Agent

[dexters.co.uk](https://www.dexters.co.uk)