



## Cromwell Road, SW5

£738 Per week

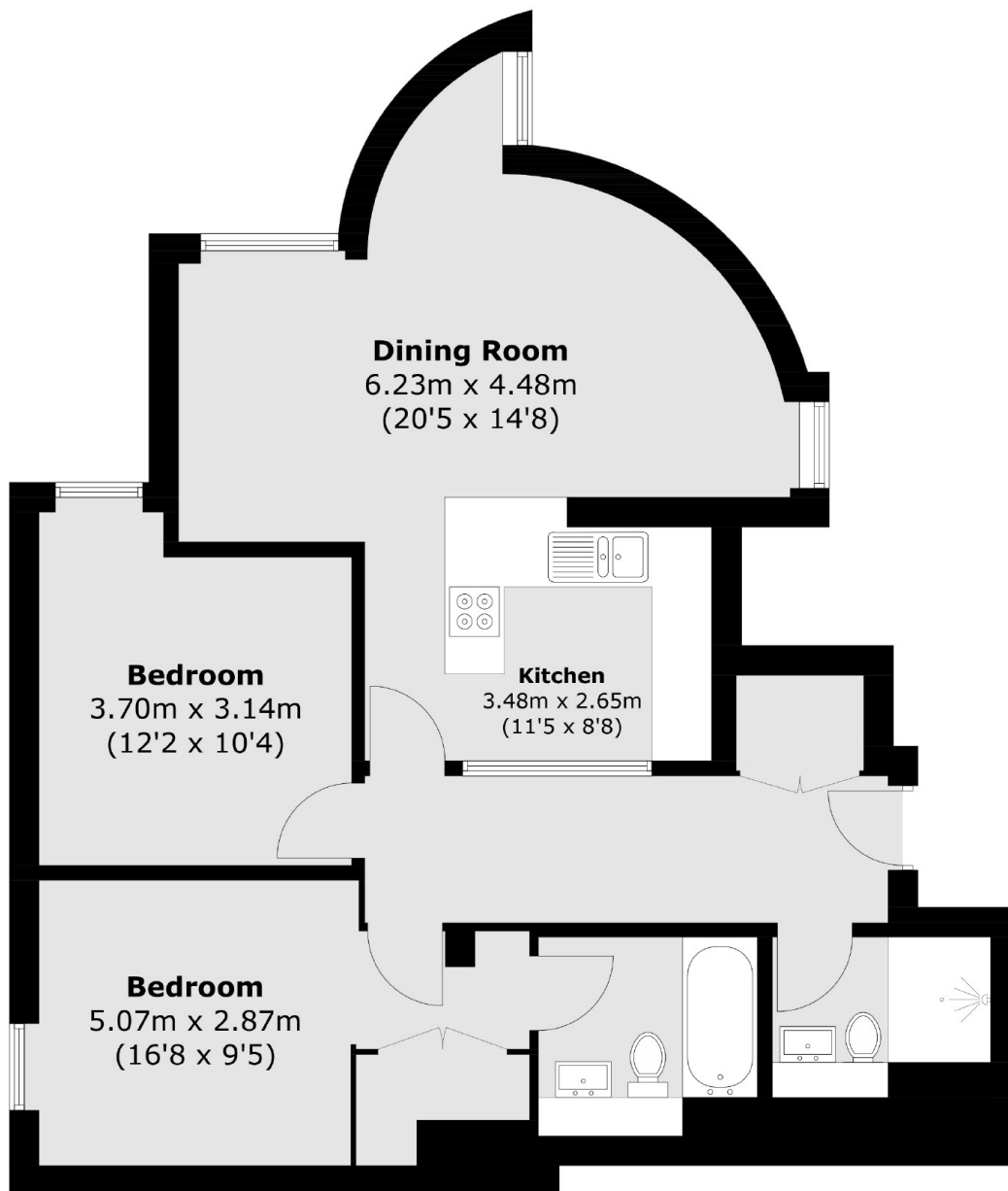
A large two double bedroom apartment situated on the third floor with lift access. The property has two bathrooms and has been fitted with wood flooring throughout.

The property is very well located for amenities and transport links of both Gloucester Road and Earl's Court, with Gloucester Road tube station only 0.3 miles away.

### Features

- Two Double Bedrooms
- Two Bathrooms
- Wooden Flooring Throughout
- Separate Dining Space
- Lift Access
- Third Floor

Cromwell Road,  
London, SW5



Total area (approx.): 71.7 sq. m (771.8 sq. ft)

**Dexters**

Earl's Court  
3 Hogarth Place  
London  
SW5 0QT  
Lettings  
020 7370 3030

Energy Rating: D. We aim to make our particulars both accurate and reliable. However they are not guaranteed; nor do they form part of an offer or contract. If you require clarification on any points then please contact us, especially if you're traveling some distance to view. Please note that appliances and heating systems have not been tested and therefore no warranties can be given as to their good working order.

 **RICS** | Regulated  
Estate Agent  
and Letting Agent

[dexters.co.uk](https://www.dexters.co.uk)