



Barkston Gardens, SW5

£1,500 Per week

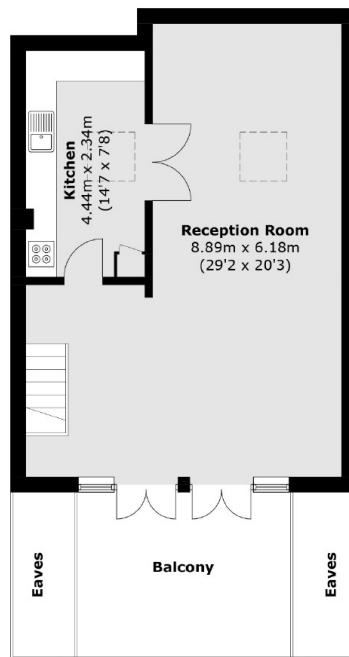
A stunning three bedroom split level flat situated on the sought after Barkston Gardens. The flat is on the top floor benefitting from lots of natural light throughout. The property boasts two roof terraces as well as a porter and lift access.

Roberts Court is situated on the sought after Barkston Gardens close to Earls Court Road with a selection of shops and cafes. Earls Court Tube Station is also located moments away.

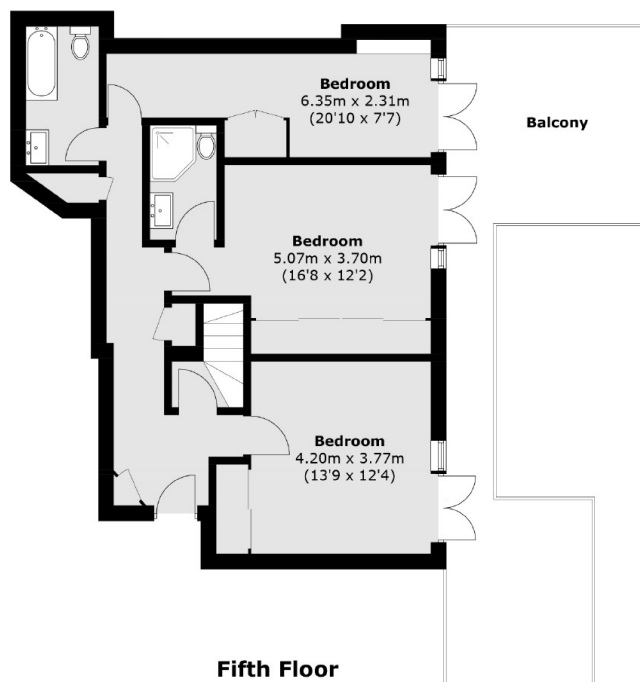
Features

- Three Bedrooms
- Two Bathrooms
- Three Roof Terraces
- Natural Light
- Porter
- Lift

Barkston Gardens, London, SW5



Sixth Floor



Fifth Floor

Total area (approx.): 120.1 sq. m (1,292.7 sq. ft)
Balcony: 44.2 sq. m (475.8 sq. ft)
(Excluding Eaves)