

## Redcliffe Close, SW5

£461 Per week

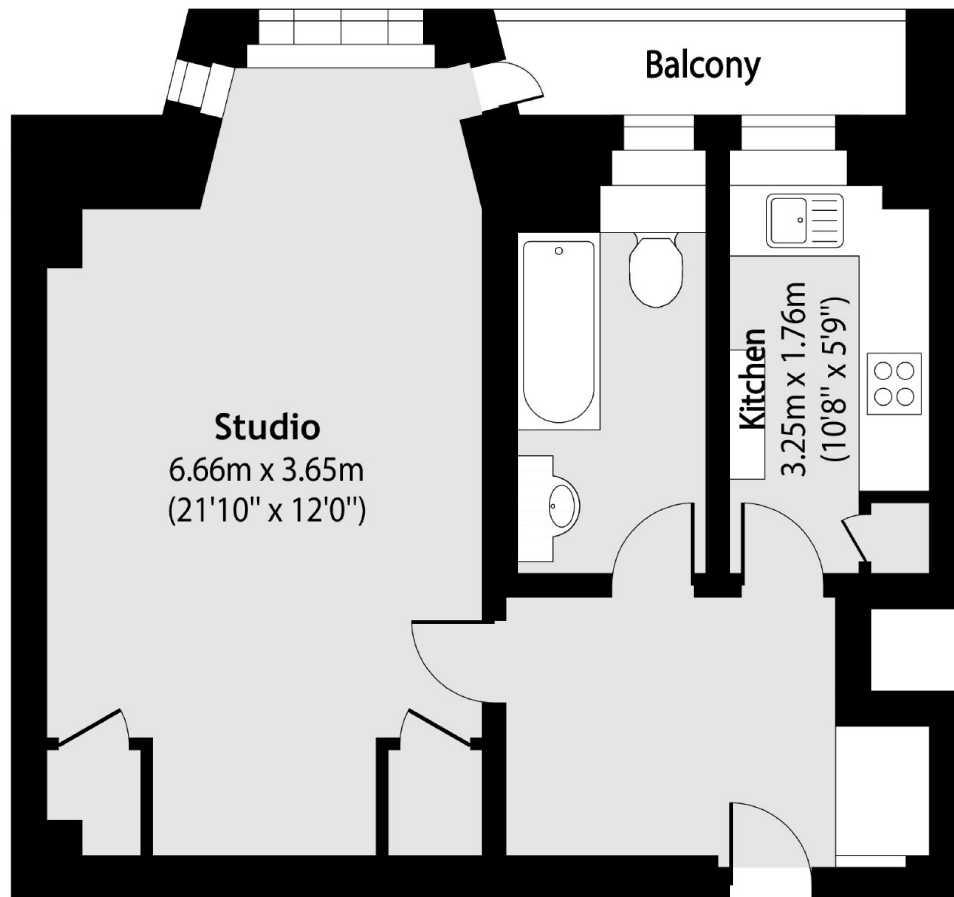
Situated on the 2nd floor this generously sized studio offers a south facing balcony wooden floors throughout as well as a separate kitchen and bathroom.

Located on the Old Brompton Road this allows easy access to Earls Court Station for tube links as well as being a stone's throw away from all the local amenities.

### Features

- Balcony
- 2nd Floor
- Lift
- Wooden Floors
- Natural Light
- South Facing

Redcliffe Close,  
London, SW5



Total area (approx): 42.93 sq m (462 sq. ft)

Balcony total area (approx): 2.71 sq m (29 sq. ft)