



Nevern Place, SW5

£1,153 Per week

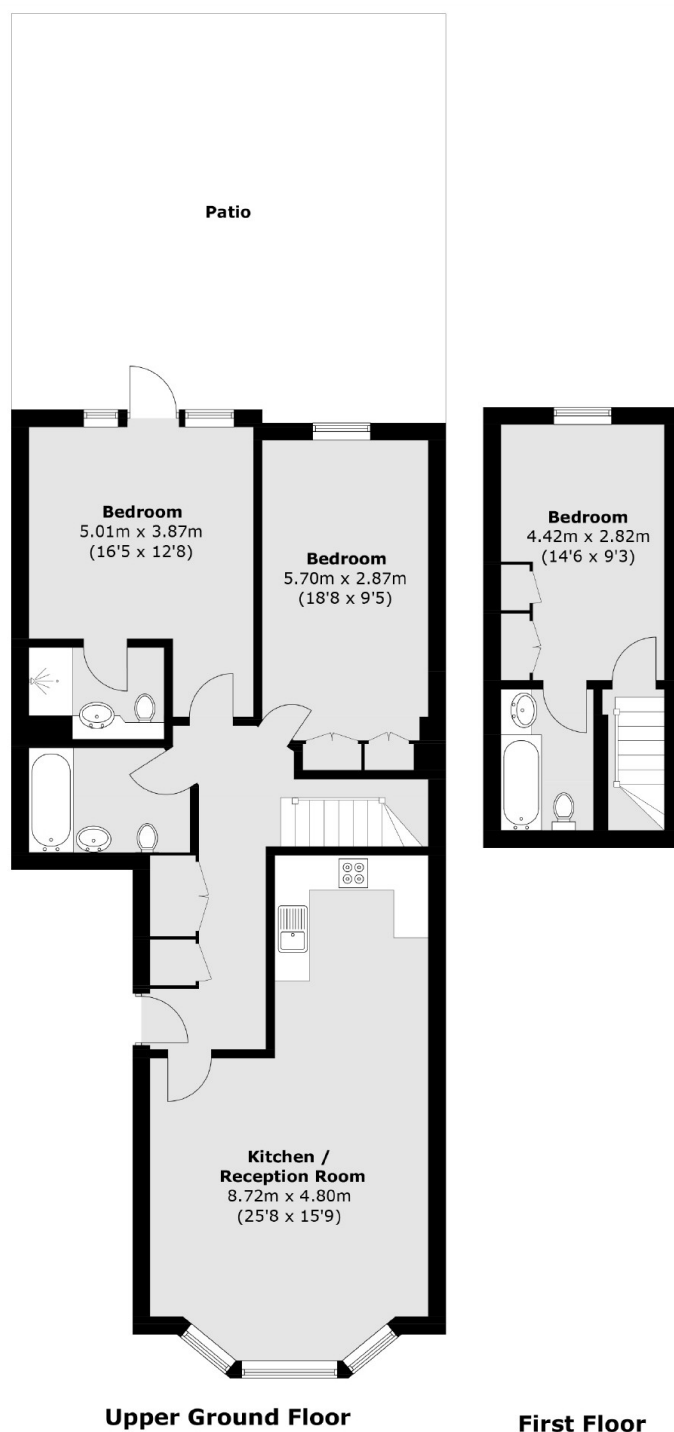
A three bedroom, three bathroom Victorian conversion property. This raised ground floor flat has a semi open plan living area and a private garden with additional access to communal gardens.

Located perfectly for both the commuter, with the tube station close by and the shops, bars and restaurants of the area are easily accessible from the flat.

Features

- Three Double Bedrooms
- Three Bathrooms
- Large Private Garden
- Split Level
- Air Conditioning
- Wood Floors Throughout

Nevern Place, London, SW5



Total area (approx.): 110.6 sq. m (1,190.4 sq. ft)

Dexters

Earl's Court
3 Hogarth Place
London
SW5 0QT
Lettings
020 7370 3030

Energy Rating: C. We aim to make our particulars both accurate and reliable. However they are not guaranteed; nor do they form part of an offer or contract. If you require clarification on any points then please contact us, especially if you're traveling some distance to view. Please note that appliances and heating systems have not been tested and therefore no warranties can be given as to their good working order.

 **RICS** | Regulated
Estate Agent
and Letting Agent

[dexters.co.uk](https://www.dexters.co.uk)