



Bolton Gardens, SW5

£519 Per week

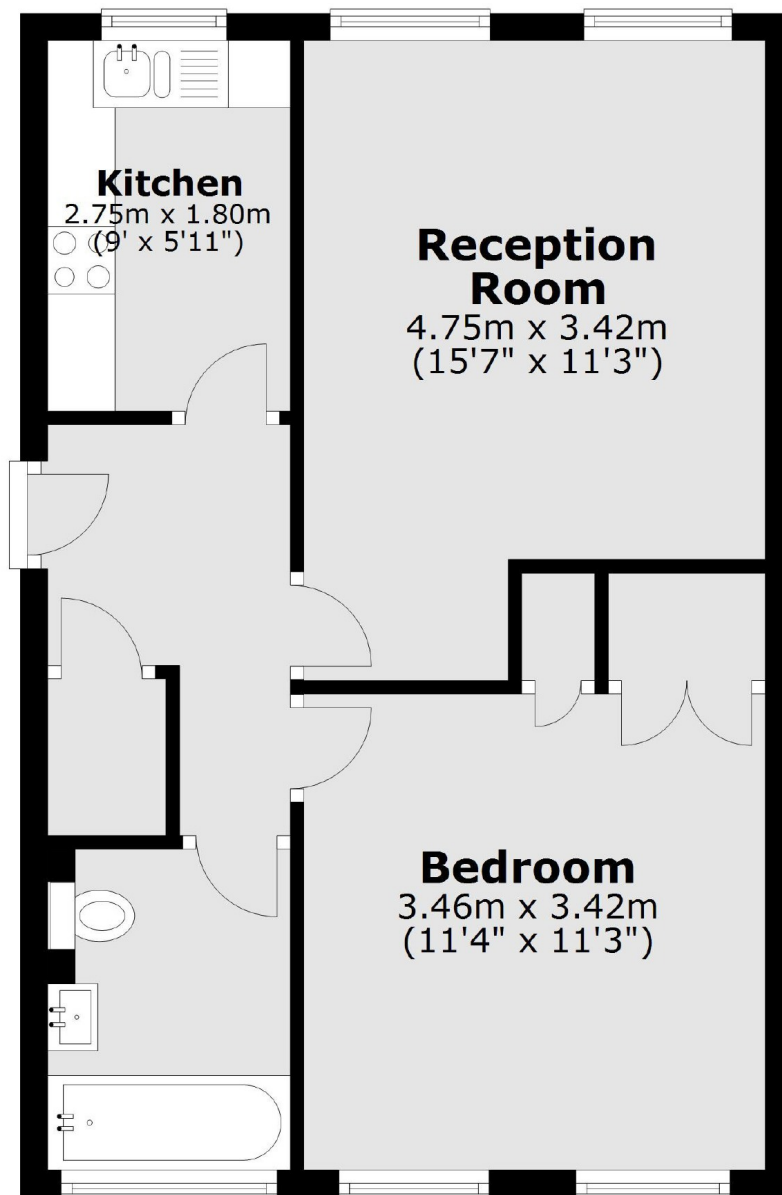
A large one double bedroom based on the sought-after Bolton Gardens, close to both Gloucester Road and Earls Court station. Benefits include wood flooring throughout and a separate kitchen.

Located near a wide range of shops and restaurants including a Marks and Spencer Simply Foods, Boots the chemist and Starbucks coffee shop. The nearest underground station is Earls Court.

Features

- Large Double Bedroom
- Modern Kitchen
- Wood Flooring Throughout
- Built In Storage
- Bolton Gardens
- Close to Transport

Bolton Gardens,
London, SW5



Total area: approx. 44.6 sq. metres (479.9 sq. feet)