



## Trebovir Road, SW5

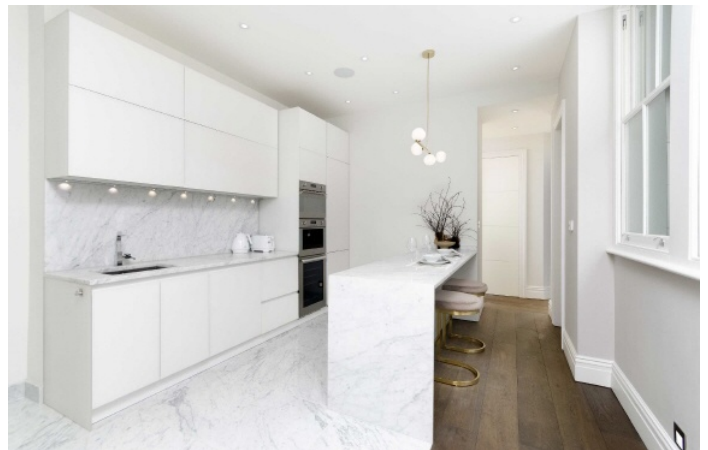
£1,350 Per week

A recently refurbished two double bedroom, two bathroom apartment based in the sought after Kensington Mansions. Other benefits include an on-site porter and access to a residential garden square.

Kensington Mansions is within a short walking distance from Earl's Court Tube Station offering the District & Circle Lines and the Piccadilly Line. The location also offers a fantastic selection of local shops, supermarkets, bars and restaurants

### Features

- Two Double Bedrooms
- Two Bathrooms
- Built-in Ceiling Speakers
- Portered
- Private Residential Gardens
- First Floor with Lift



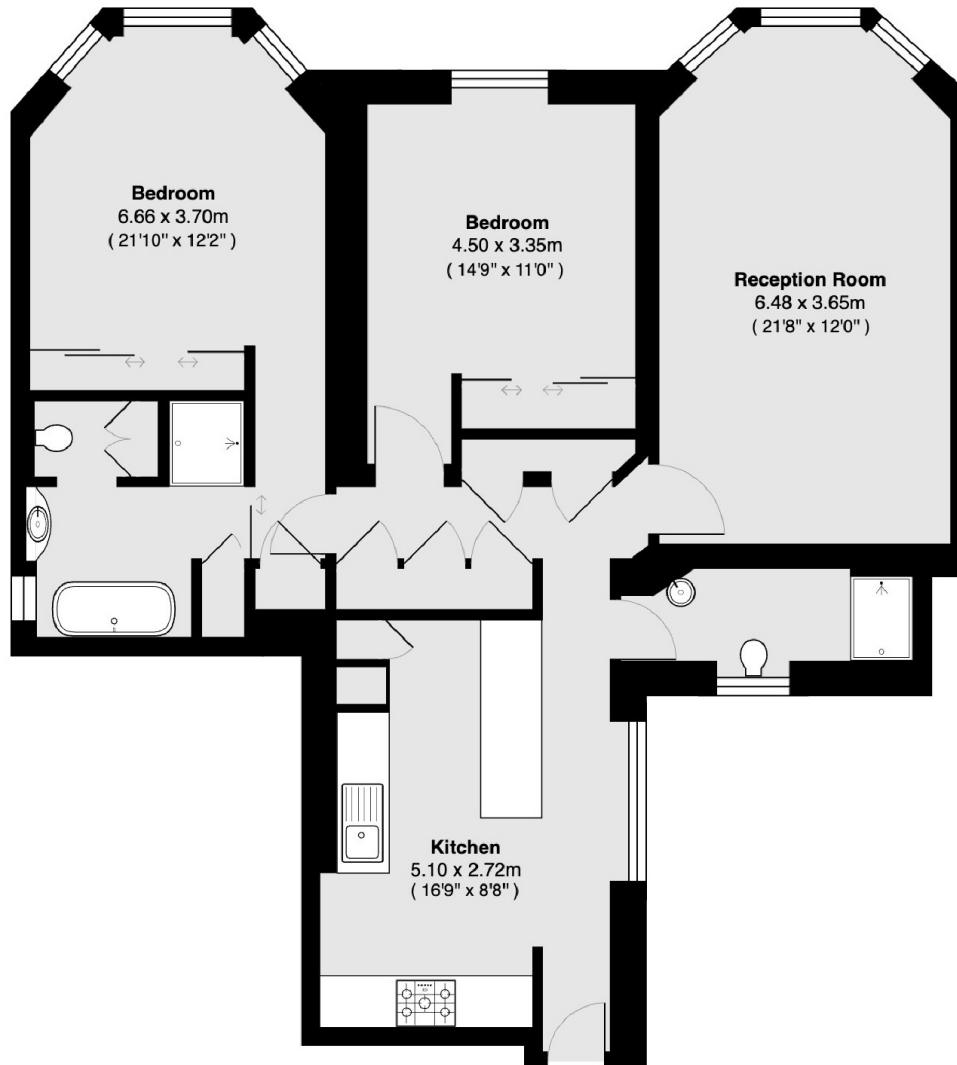
## Trebovir Road, SW5

Set within an attractive and highly desirable red brick period mansion block renowned for its large lateral apartments and benefits such as a porter and access into a beautiful communal gardens.





Trebovir Road,  
London, SW5



**Total area 100.9 sq m ( approx ) ( 1086 sq ft approx )**

**Dexters**

Earl's Court  
3 Hogarth Place  
London  
SW5 0QT  
Lettings  
020 7370 3030

Energy Rating: . We aim to make our particulars both accurate and reliable. However they are not guaranteed; nor do they form part of an offer or contract. If you require clarification on any points then please contact us, especially if you're traveling some distance to view. Please note that appliances and heating systems have not been tested and therefore no warranties can be given as to their good working order.

 **RICS** | Regulated  
Estate Agent  
and Letting Agent

[dexters.co.uk](http://dexters.co.uk)