



## Earls Court Road, W8

£437 Per week

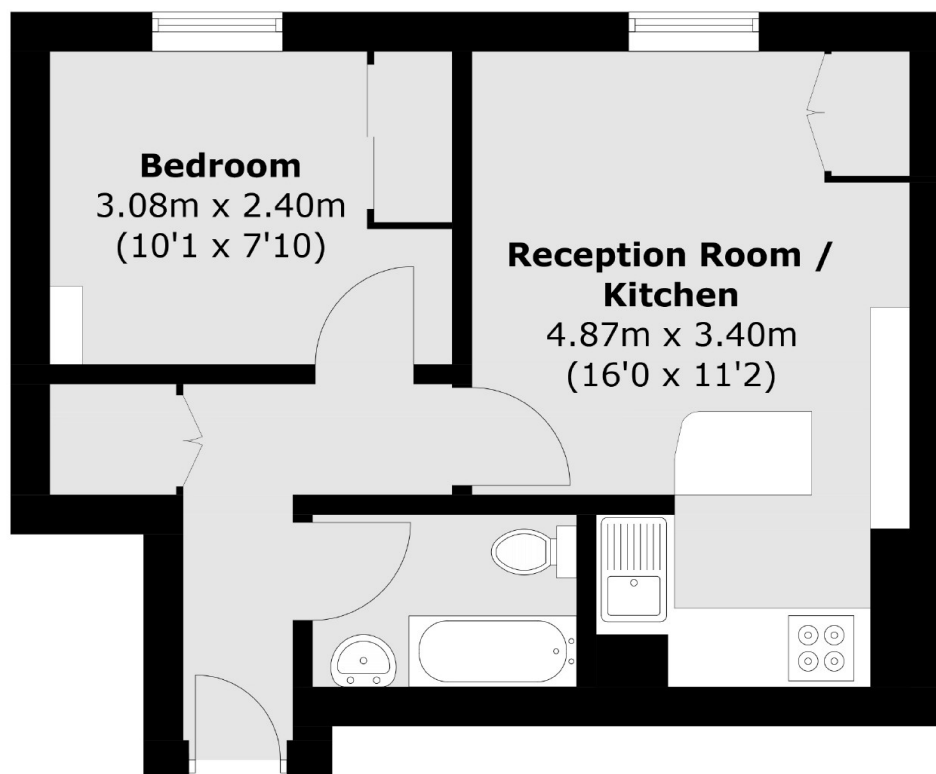
A one double bedroom apartment based within a period conversions, in Kensington W8. The apartment has wood floors throughout, an open plan kitchen and built-in storage.

The apartment is based on the Kensington end of Earls Court Road. You have the benefit of being in close proximity to both the amenities for the High Street as well as the enviable transport links the area has to offer.

### Features

- One Double Bedroom
- Period Conversion
- Open Plan Kitchen
- Built-in Storage
- Furnished
- Close to Transport

# Earls Court Road, London, W8



Total area (approx.): 31.0 sq. m (333.7 sq. ft)