



## Cromwell Road, SW5

£2,076 Per week

Grandeur and opulence are steeped throughout this lateral six bedroom flat with lift in a beautiful red brick mansion block. This flat is the perfect size and location for a family.

Cromwell Mansions is located in between Gloucester Road and Earls Court. Commuting to the city will be a breeze, whilst the Lycee School is within walking distance and Heathrow is just one tube line away.

### Features

- Six Bedrooms
- Three Bathrooms
- Two Reception Rooms
- Third Floor
- Lift Access
- Wooden Flooring Throughout



## Cromwell Road, SW5

Set within a grand mansion block, the flat is entered into on the third floor. There is a large entrance hallway that both reception rooms are entered off to the front of the building, allowing for plenty of space for entertaining and dining.

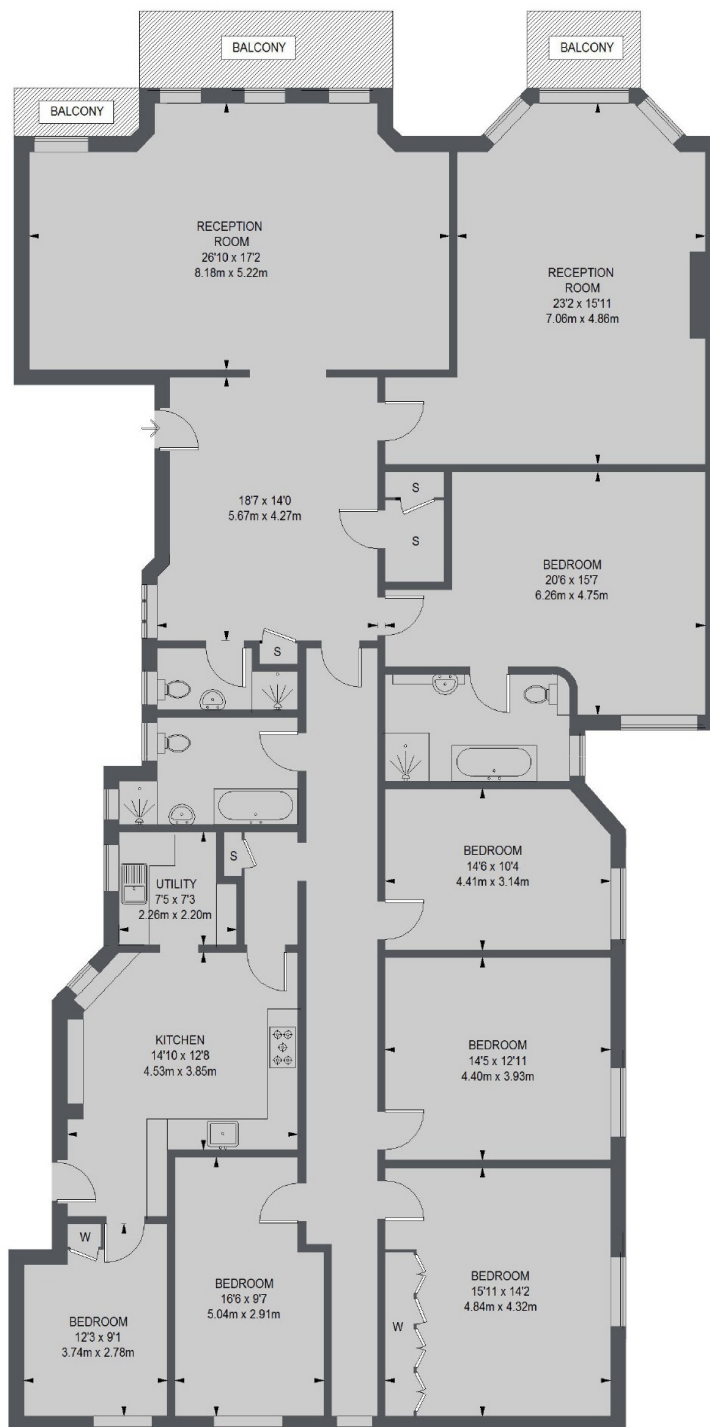
The master bedroom with built in storage and en suite bathroom is the first bedroom you come across on a hallway that has four further double bedrooms with built in storage and two bathrooms.

The eat in kitchen is equipped with an "American" style fridge/freezer, a large range cooker and a utility room with washer and dryer beside it. There is a sixth bedroom off the kitchen that would be perfect for a nanny.





# Cromwell Road, London, SW5



TOTAL APPROX. FLOOR AREA 2957 SQ. FT. (274.7 SQ. M.)

## Dexters

Earl's Court  
3 Hogarth Place  
London  
SW5 0QT

Lettings  
020 7370 3030

Energy Rating: D. We aim to make our particulars both accurate and reliable. However they are not guaranteed; nor do they form part of an offer or contract. If you require clarification on any points then please contact us, especially if you're traveling some distance to view. Please note that appliances and heating systems have not been tested and therefore no warranties can be given as to their good working order.

 **RICS** Regulated  
Estate Agent  
and Letting Agent

[dexters.co.uk](http://dexters.co.uk)