

Eardley Crescent, SW5

£657 Per week

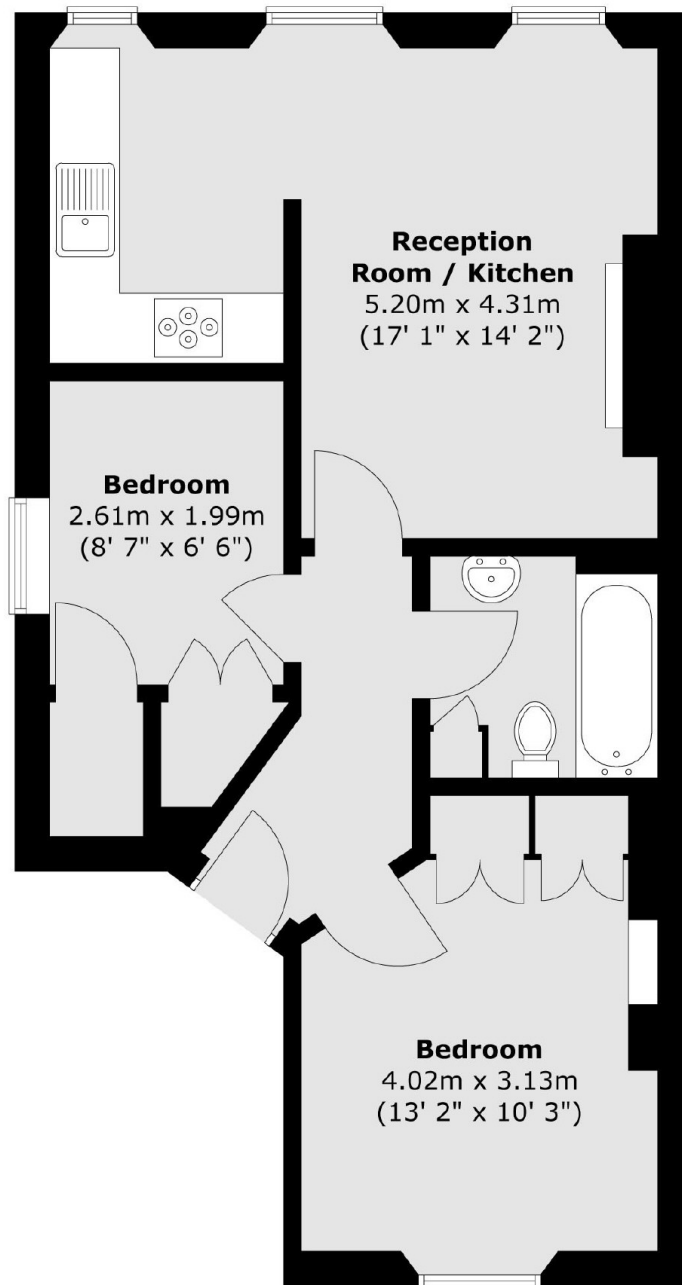
A well-presented two bedroom apartment arranged over the first floor of a Victorian conversion, with high ceilings, wooden flooring and built in wardrobes.

Eardley Crescent is located close to the shops and cafes of Earls Court Road including Marks and Spencer Simply Foods, Starbucks coffee shop and a Tesco supermarket. The closest underground stations are Earls Court.

Features

- Two Bedrooms
- One Bathroom
- First Floor Flat
- Open Plan Kitchen
- Wood Flooring
- High Ceilings

Eardley Crescent, London, SW5



Total area (approx.) : 46.9 sq. m (505 sq. ft)