



Lexham Gardens, W8

£975 Per week

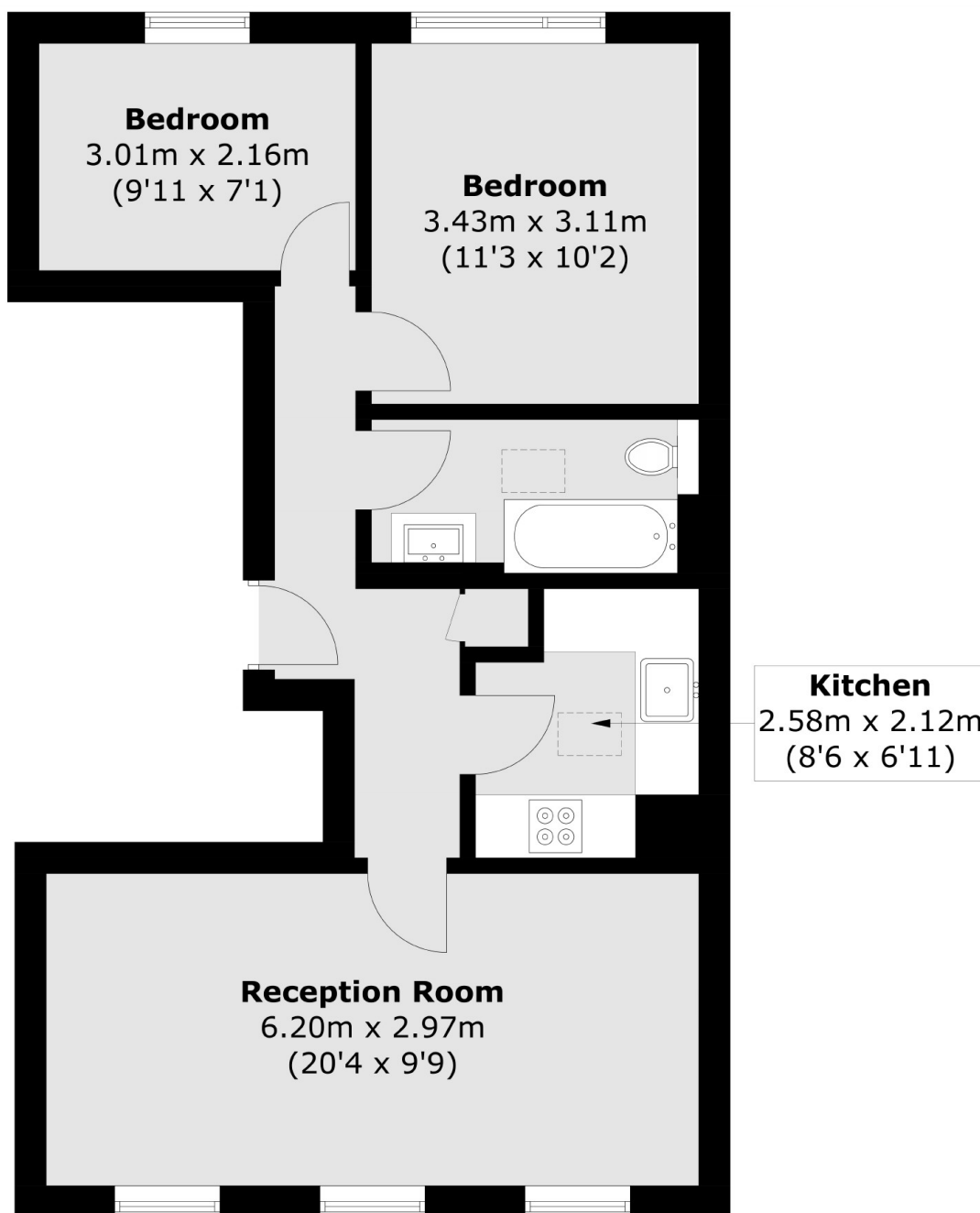
A modern two double bedroom apartment newly refurbished to an exceptional standard. The property is offered fully furnished and is based within the sought-after Lexham Gardens.

Lexham Gardens is a premier street in Kensington, within close proximity to High Street Kensington, Hyde Park, Gloucester Road and Earl's Court tube stations, with easy access to the A4 and central London.

Features

- Two Double Bedrooms
- One Bathrooms
- Brand New Refurb
- Fully Furnished
- Lift Access

Lexham Gardens, London, W8



Fifth Floor

Total area (approx.): 53.7 sq. m (578.0 sq. ft)