



Cromwell Road, SW5

£1,067 Per week

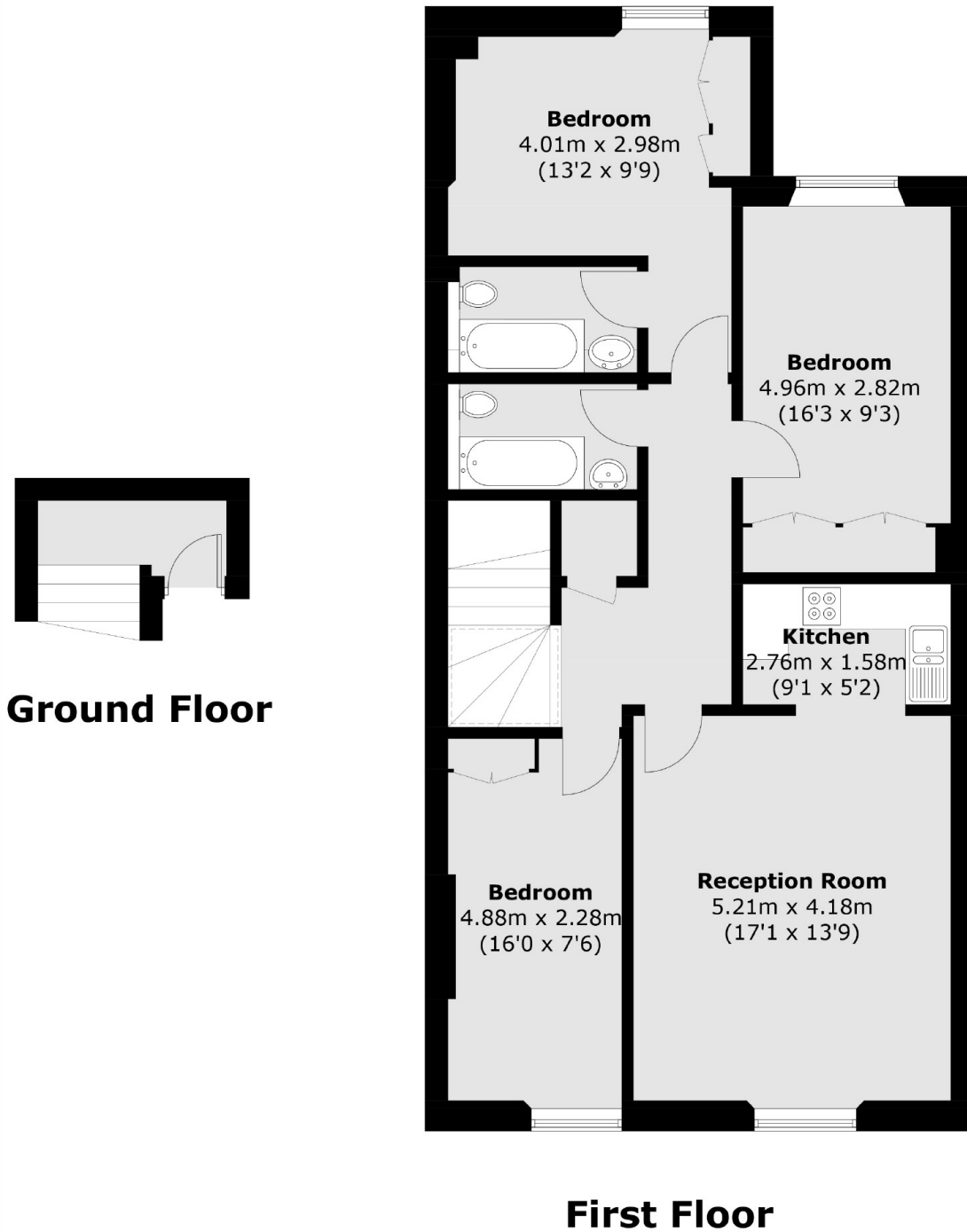
A fantastic three double bedroom flat located on Cromwell Road. The apartment consists of three large bedrooms, two bathrooms, a light and airy reception and separate kitchen that is fully equipped.

This flat is located close to all local amenities of both Earls Court Road and Gloucester Road, with the nearby supermarkets such as Sainsbury's, Tesco 24hour only 0.4 miles away.

Features

- Three Double Bedrooms
- Two bathrooms
- Period Conversion
- Fourth Floor
- Plenty Of Storage
- Furnished

Cromwell Road,
London, SW5



Total area (approx.): 91.8 sq. m (988.0 sq. ft)