

## Earls Court Road, SW5

£1,500 Per week

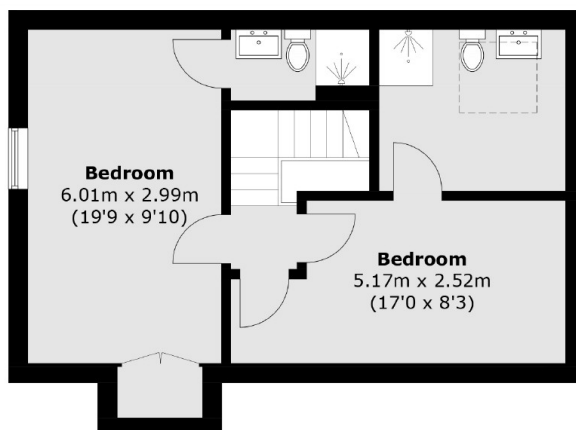
A large, newly refurbished four bedroom apartment split over two floors. Benefits include three bathrooms, wood flooring throughout and finished to a modern standard.

The apartment is enviously based just on Earls Court Road, with an array of shops, bars and restaurants within walking distance, including M&S Simply Food and Paul's Bakery to name a couple.

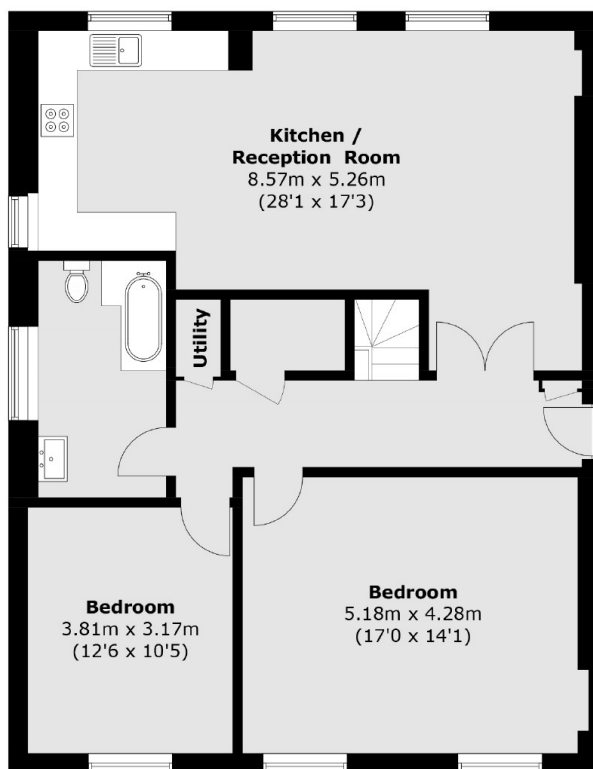
### Features

- Brand New Refurbishment
- Four Bedrooms
- Double-height Ceilings
- Large Double Glazed Windows
- Split Level
- Close to Transport & Amenities

# Earls Court Road, London, SW5



**Third Floor**



**Second Floor**

Total area (approx.): 140.1 sq. m (1508.0 sq. ft)