

Earls Court Road, SW5

£1,000 Per week

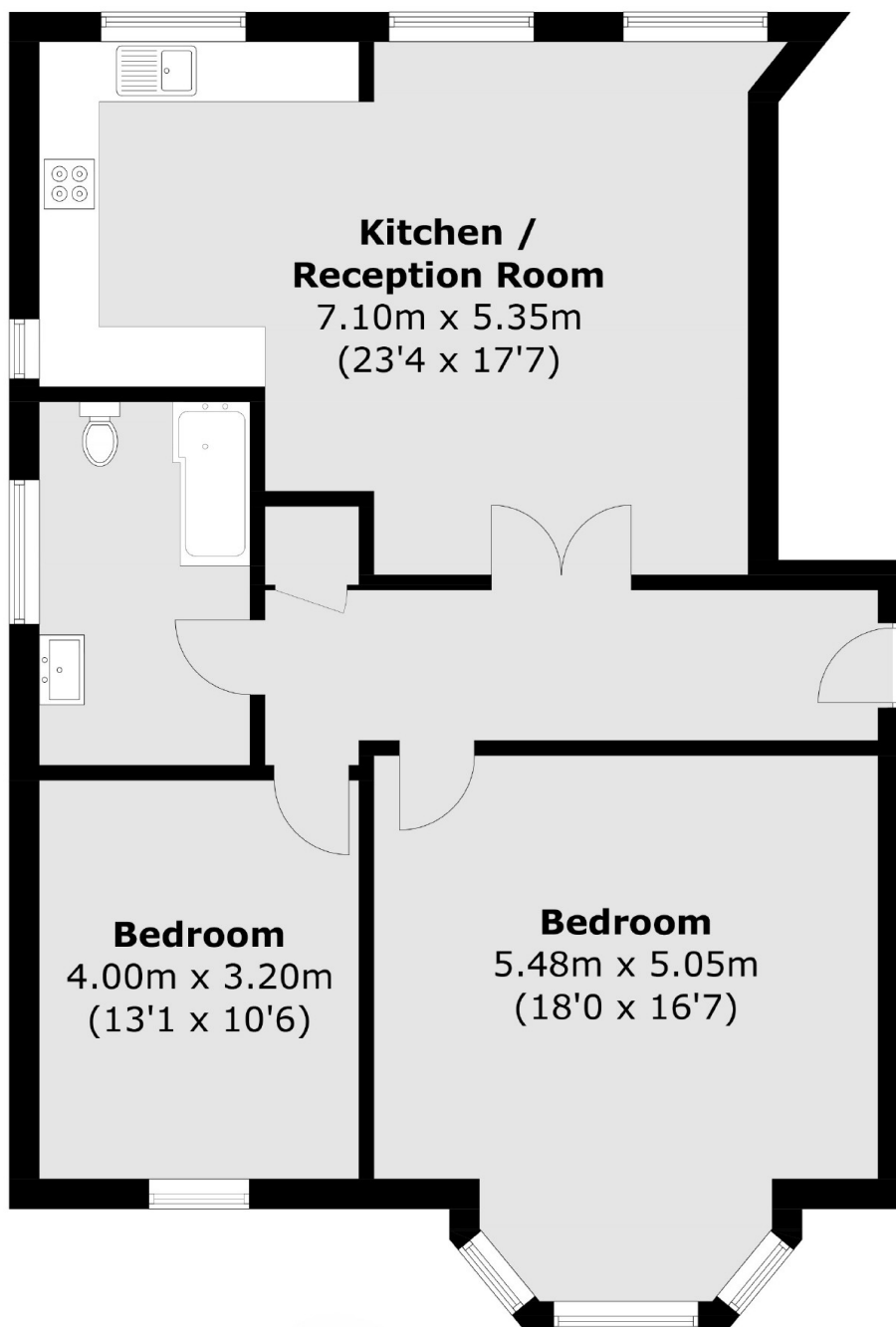
A rare opportunity to rent a brand new, fully refurbished apartment in the heart of Earls Court. Benefits include double-height ceilings, wood flooring throughout, a modern open-plan kitchen and two double bedrooms.

The apartment is enviously based just on Earls Court Road, with an array of shops, bars and restaurants within walking distance, including M&S Simply Food and Paul's Bakery to name a couple.

Features

- Brand New Refurbishment
- Two Double Bedrooms
- Double-height Ceilings
- Large Double Glazed Windows
- Modern Finish
- Close to Transport & Amenities

Earls Court Road, London, SW5



Total area (approx.): 92.1 sq. m (991.4 sq. ft)