



Philbeach Gardens, SW5

£800 Per week

A spacious two double bedroom apartment based on the raised ground floor within Philbeach Gardens, SW5. The property also has the rare luxury of having a large private garden to the rear.

Philbeach Gardens is a quiet crescent street in Earls Court just seconds away from the rear entrance of Earls Court tube station. There are a number of shops and restaurants minutes away on Earls Court Road.

Features

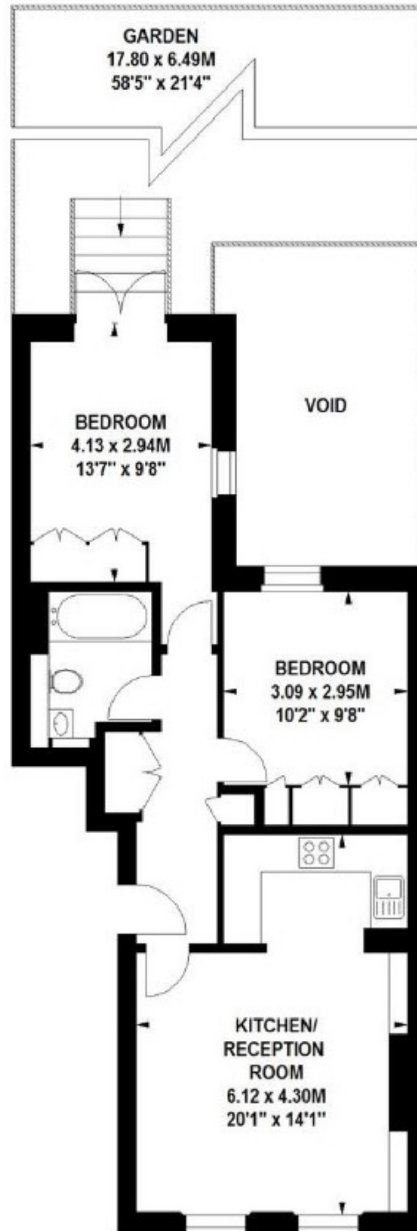
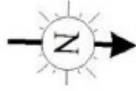
- Two Double Bedrooms
- Large Private Garden
- Raised Ground Floor
- Double High Ceilings
- Wood Flooring
- Built-in Storage

Philbeach Gardens, London, SW5

Philbeach Gardens, SW5

Approximate gross internal area

60.20 sq m / 648 sq ft



Ground Floor

Illustration For Identification Purposes Only. Not To Scale

Dexters

Earl's Court
3 Hogarth Place
London
SW5 0QT

Lettings
020 7370 3030

Energy Rating: . We aim to make our particulars both accurate and reliable. However they are not guaranteed; nor do they form part of an offer or contract. If you require clarification on any points then please contact us, especially if you're traveling some distance to view. Please note that appliances and heating systems have not been tested and therefore no warranties can be given as to their good working order.



dexters.co.uk