



Philbeach Gardens, SW5

£1,373 Per week

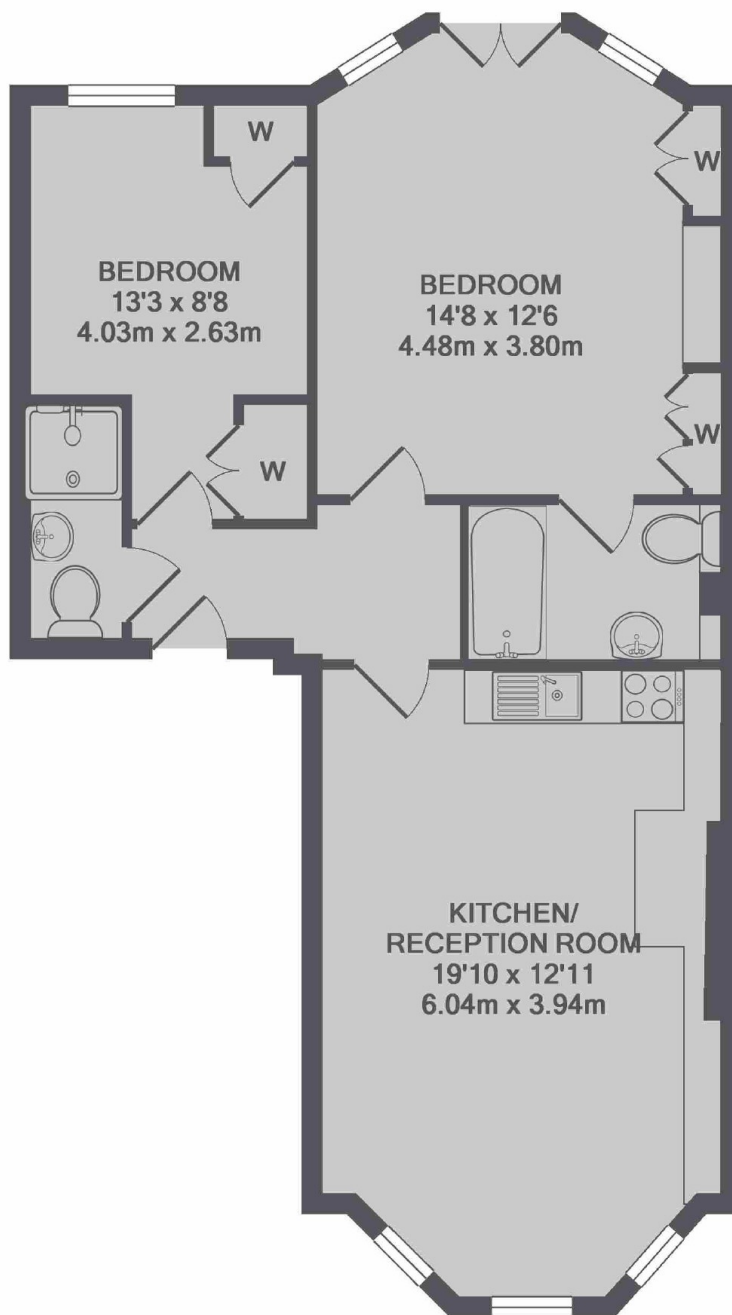
SHORT LET - A unique two bedroom apartment finished to a high standard on one of Earls Court's most popular streets. The property boasts high ceilings and a private balcony overlooking the communal gardens - All bills included with weekly cleaner and bedding.

Located on a one way street, Philbeach Gardens is close to all shops, restaurants and cafe's of Earl's Court while the tube station is only 0.34 miles away.

Features

- ALL BILLS INC
- Weekly Cleaner & Bedding
- Two Double Bedrooms
- Two Bathrooms
- Private Balcony
- Communal Garden Access

Philbeach Gardens, London, SW5



TOTAL APPROX. FLOOR AREA 638 SQ.FT. (59.3 SQ.M.)