



## Philbeach Gardens, SW5

£1,373 Per week

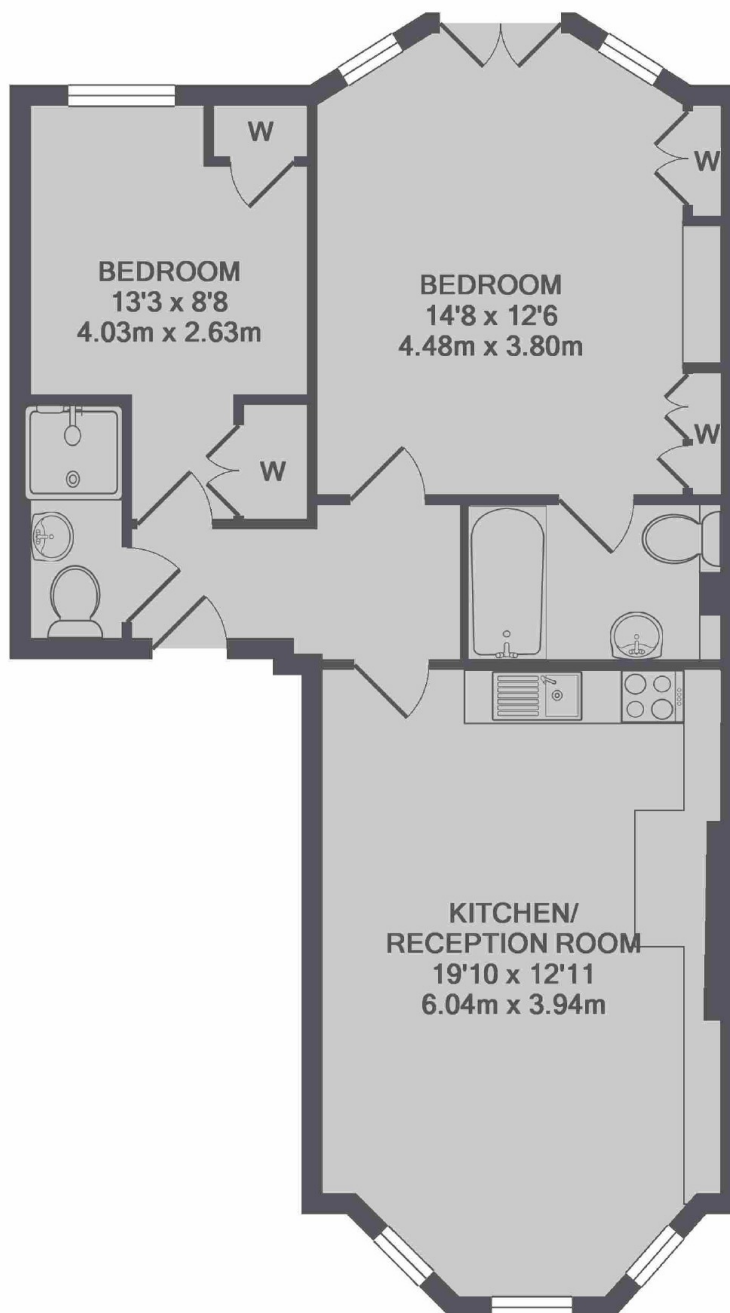
SHORT LET - A truly unique two bedroom apartment finished to the highest of standards on one of Earls court's most popular crescent streets. The property boasts high ceilings, two bathrooms and private balcony overlooking the communal gardens - All bills included.

Located on a one way street, Philbeach Gardens is close to all shops, restaurants and cafe's of Earl's Court while the tube station is only 0.34 miles away.

### Features

- ALL BILLS INC
- Two Double Bedrooms
- Two Bathrooms
- High Ceilings
- Private Balcony
- Communal Garden Access

# Philbeach Gardens, London, SW5



TOTAL APPROX. FLOOR AREA 638 SQ.FT. (59.3 SQ.M.)