

Earl's Court Square, SW5

£650 Per week

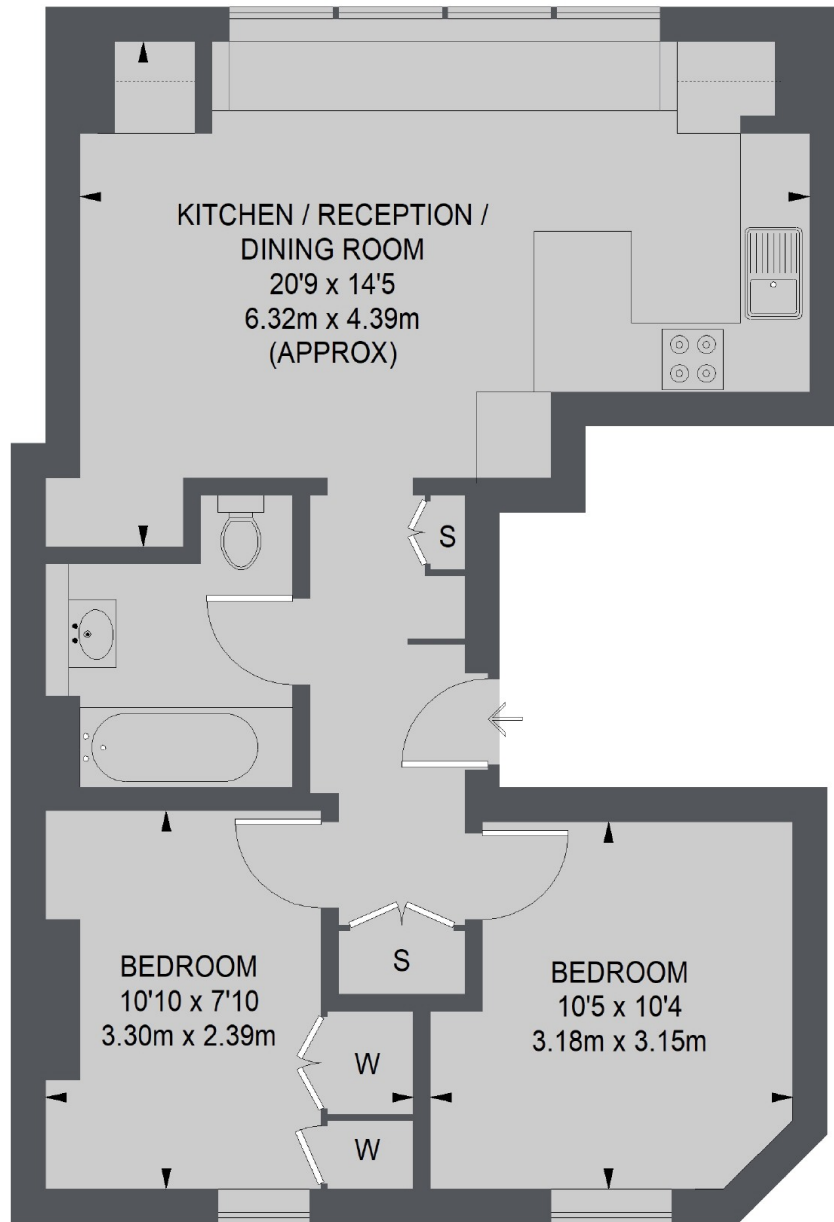
A two double bedroom apartment situated on the second floor of a beautiful redbrick period conversion. The property is finished to a high standard throughout, including a bright open plan kitchen overlooking the communal garden square.

Arguably Earl's Courts finest garden square, Earls Court Square is nestled quietly away from the hustle and bustle of Earls Court Road, whilst remaining comfortably within walking distance of the amenities and tube.


Features

- Two Double Bedrooms
- Open Plan Kitchen
- Garden Views
- Ample Built-in Storage
- Communal Garden Access
- Period Conversion

Earl's Court Square, London, SW5



SECOND FLOOR

 = REDUCED HEADROOM
BELOW 1.5 M / 5'0

TOTAL APPROX. FLOOR AREA 583 SQ. FT. (54.18 SQ. M.)