



Warwick Road, W14

£484 Per week

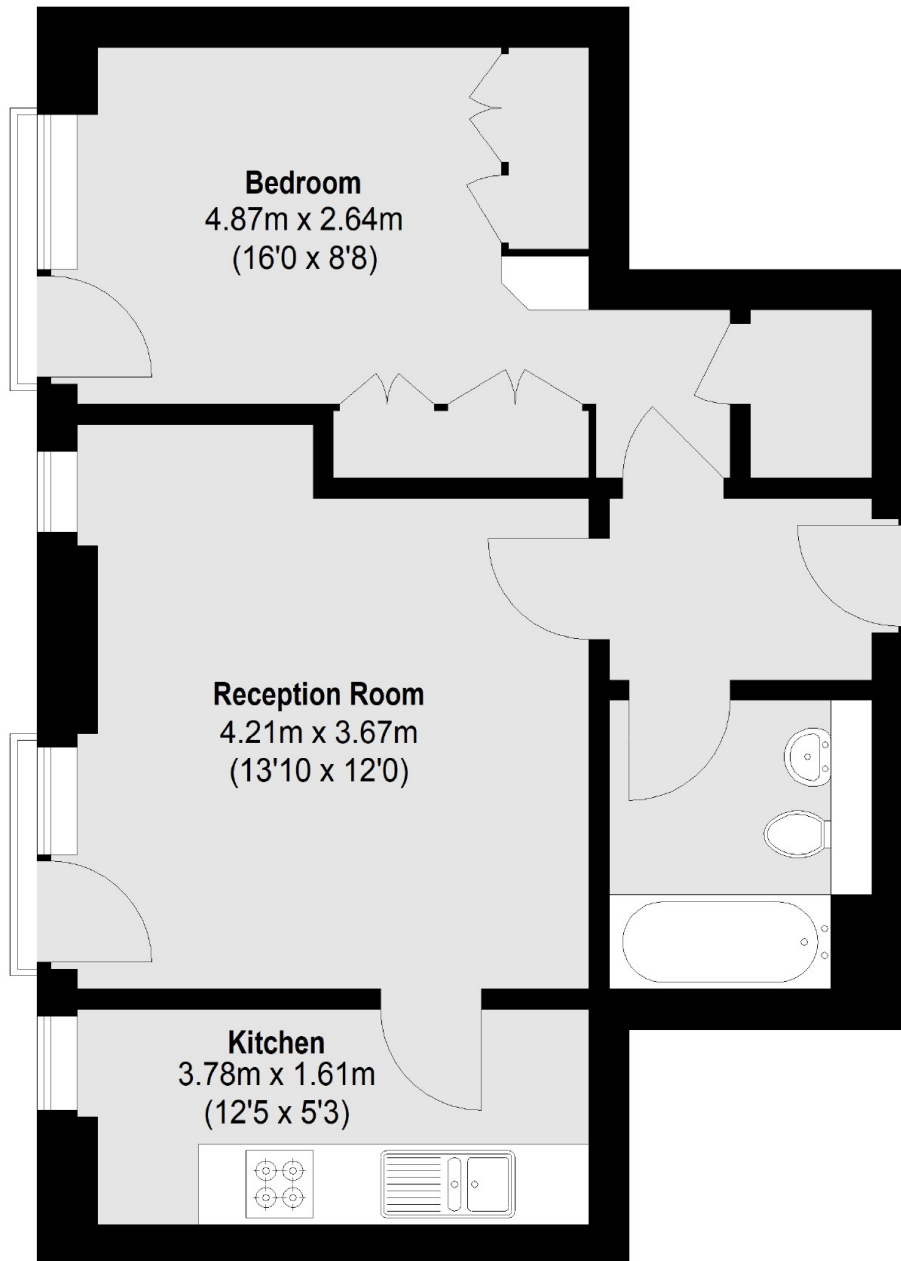
This bright and spacious one bedroom apartment is situated on the second floor of this popular development, with wood flooring throughout and access to the communal garden.

The property is located between High Street Kensington and Earls Court, with the nearest tube station being 0.3 miles away (Piccadilly and District lines).

Features

- One Double Bedroom
- Two Juliet Balconies
- Wooden Flooring
- Separate Kitchen
- Built-In Storage
- Communal Gardens

Warwick Road, London, W14



Total area (approx.): 44.36 sq. m (477 Sq. ft)