



Earl's Court Square, SW5

£1,269 Per week

A spacious and recently refurbished three bedroom apartment on the top floor of a Victorian conversion. Compromising a spacious reception room, three double bedrooms, private roof terrace and access to communal gardens.

Earl's Court Square is conveniently located between Earl's Court Road and Warwick Road and provides an array of shops, restaurants and bars within close proximity. The nearest Underground Station is Earl's Court and provides great transport links into central London.

Features

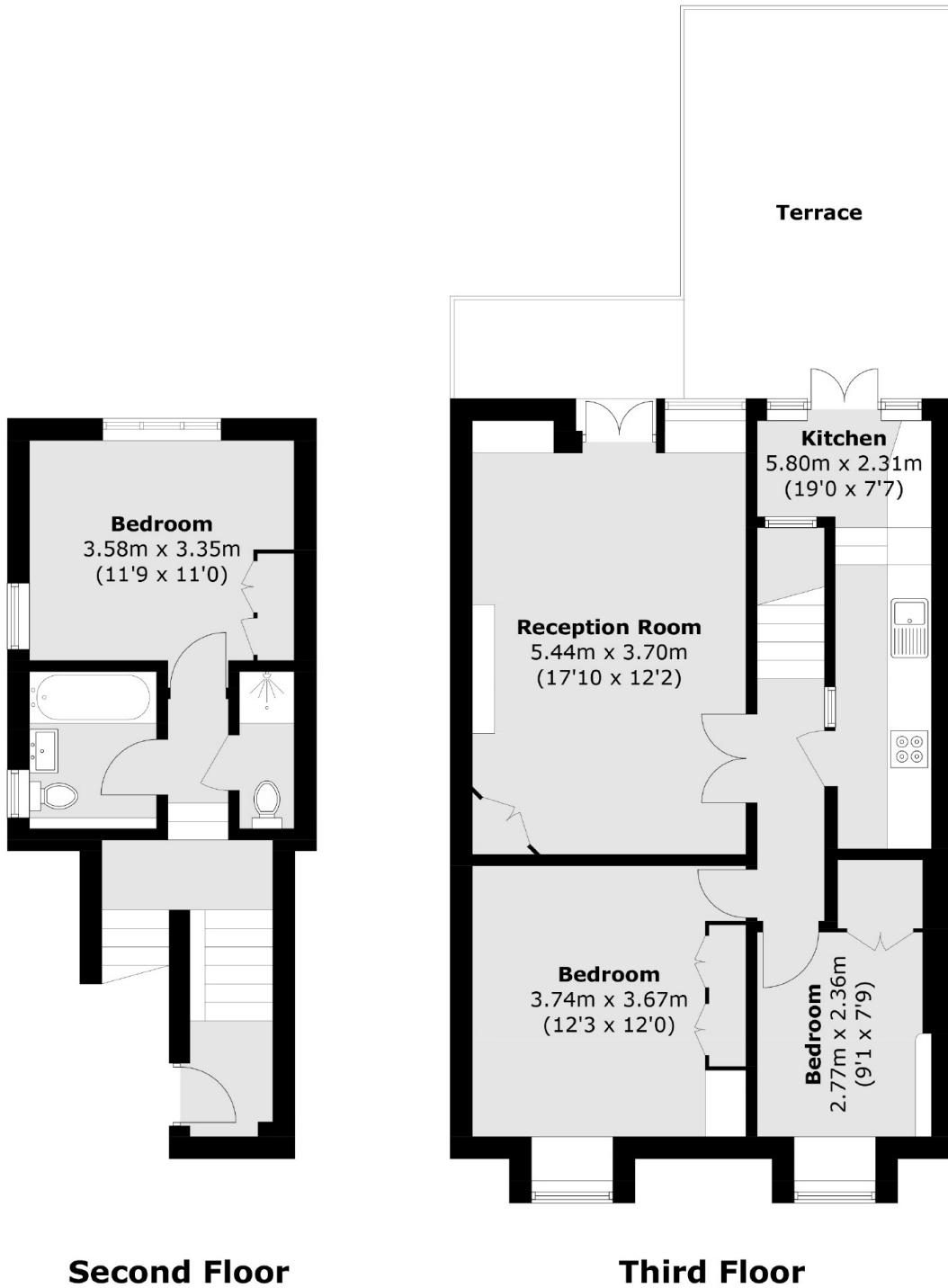
- Three Bedroom
- Two Bathroom
- Private Roof Terrace
- Communal Gardens
- Newly Refurbished



Earl's Court Square, SW5



Earl's Court Square, London, SW5



Total area (approx.): 86.5 sq. m (931.1 sq. ft)
Terrace: 23.1 sq. m (248.6 sq. ft)