

Philbeach Gardens, SW5

£785 Per week

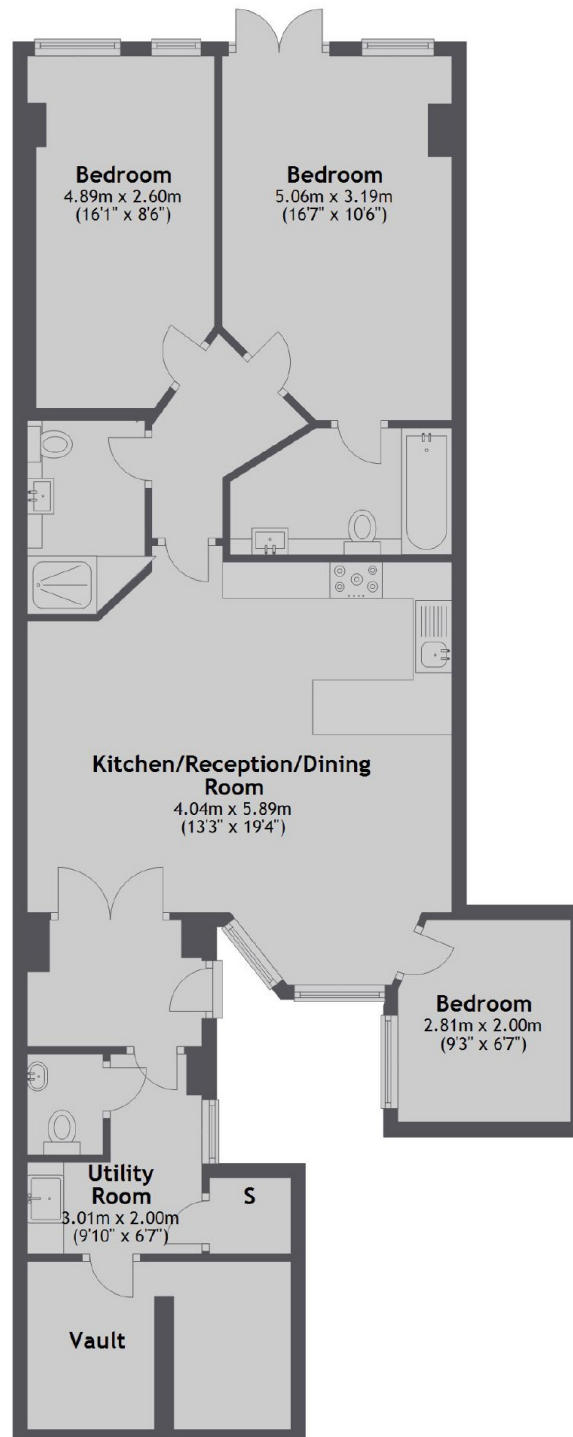
A unique three double bedroom lower ground floor apartment with direct access to the communal Philbeach gardens, with wood flooring throughout and plenty of storage.

Philbeach Gardens is a quiet crescent street set peacefully away from the highstreet and all that there is to offer, including Over & Under Coffee shop, Marks & Spencer food and a number of restaurants.

Features

- Three Double Bedrooms
- Two Bathrooms
- Separate W/C
- Wood Flooring
- Communal Garden
- Dish Washer

Philbeach Gardens, London, SW5



Total area: approx. 101.1 sq. metres (1088.3 sq. feet)