



## Knaresborough Place, SW5

£475 Per week

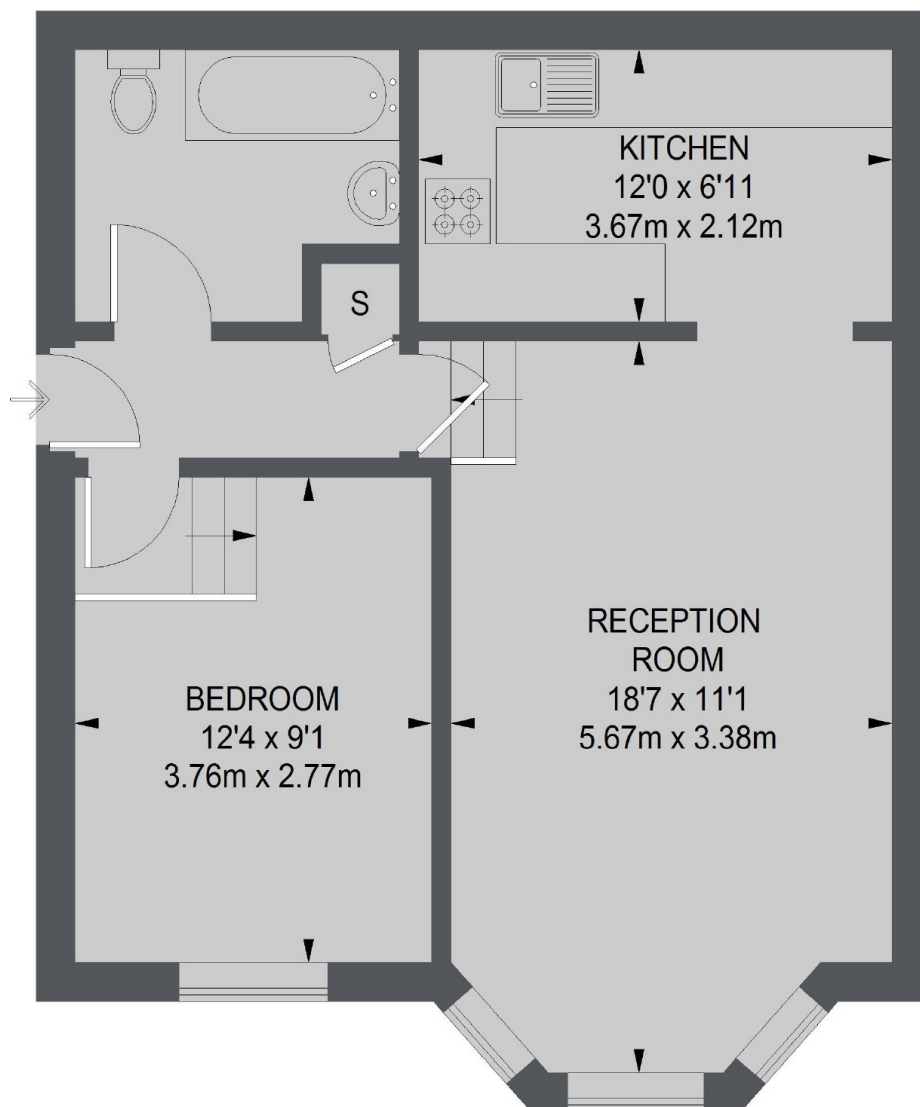
A unique split level one bedroom apartment on the fourth floor of this period block with lift access. The flat has wood flooring and high ceilings throughout.

Knaresborough Place is located with easy reach to shops, bars and restaurants of both Gloucester Road and Earl's Court, while Earl's Court station is only 0.1 mile away.

### Features

- One Double Bedroom
- Wood Flooring
- Split Level
- Built-in Storage
- Fourth Floor
- Lift Access

# Knaresborough Place, London, SW5



TOTAL APPROX. FLOOR AREA  
499 SQ. FT. (46.36 SQ. M.)