



## Pembroke Road, W8

£750 Per week

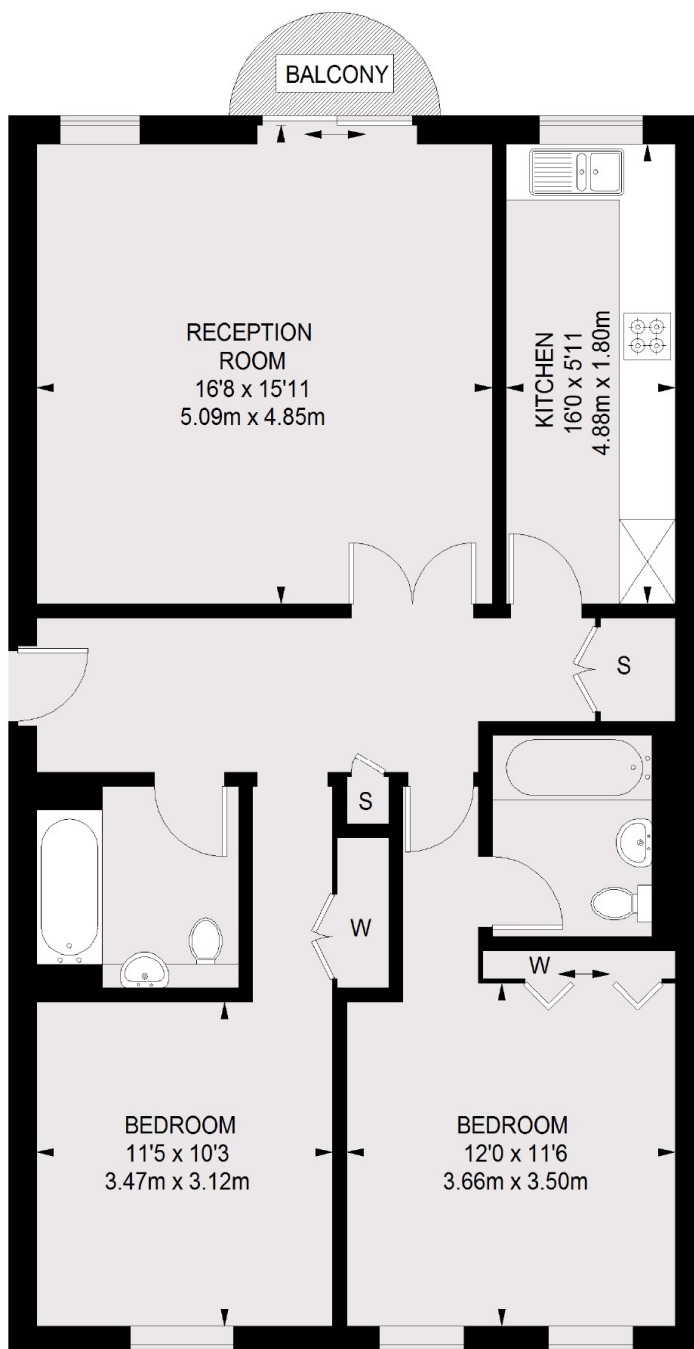
A large two double bedroom, two bathroom apartment with wood flooring and neutral decor throughout, allowing access to its own private balcony, communal swimming pool, spa & gym facilities with large communal gardens.

Huntsmore House is located with easy access to all local amenities and transport links of both High Street Kensington and Earl's Court with a Tesco supermarket only 0.1 mile away.

### Features

Swimming Pool, Spa & Gym  
Two Double Bedrooms  
Two Bathrooms  
Wood Flooring  
24hr Concierge  
Lift Access

# Pembroke Road, London, W8



TOTAL APPROX. FLOOR AREA 924 SQ. FT. (85.85 SQ. M.)  
BALCONY = 21 SQ. FT. (1.93 SQ. M.)