



## Lexham Gardens, W8

£795 Per week

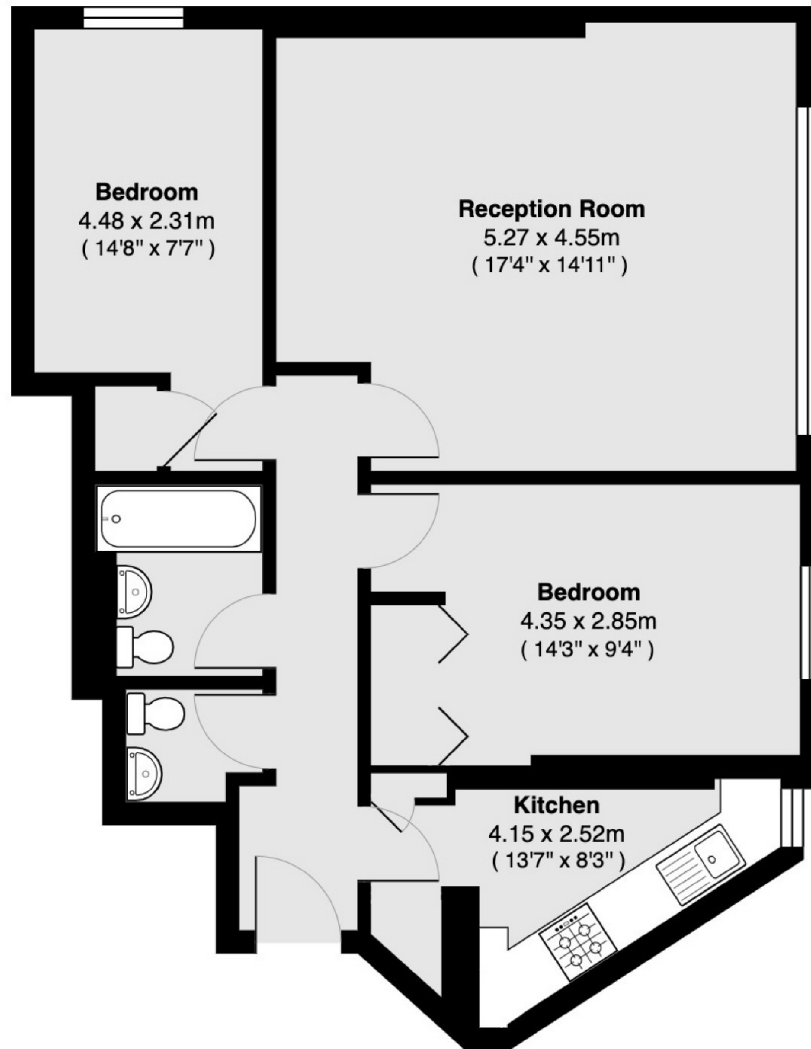
A bright and spacious three double bedroom (lounge conversion) apartment based on the third floor of a period conversion with lift access, wood flooring and access to the communal gardens and separate WC.

Located between Gloucester Road and Kensington High Street with a wide choice of shops and restaurants including Waitrose, Starbucks and Marks and Spencer's.

### Features

Three Double Bedrooms  
Separate Kitchen  
Third Floor with Lift  
Wood Flooring  
Communal Gardens  
Furnished

# Lexham Gardens, London, W8



**Total area 66.0 sq m ( approx ) ( 711 sq ft approx )**