



Nevern Square, SW5

£692 Per week

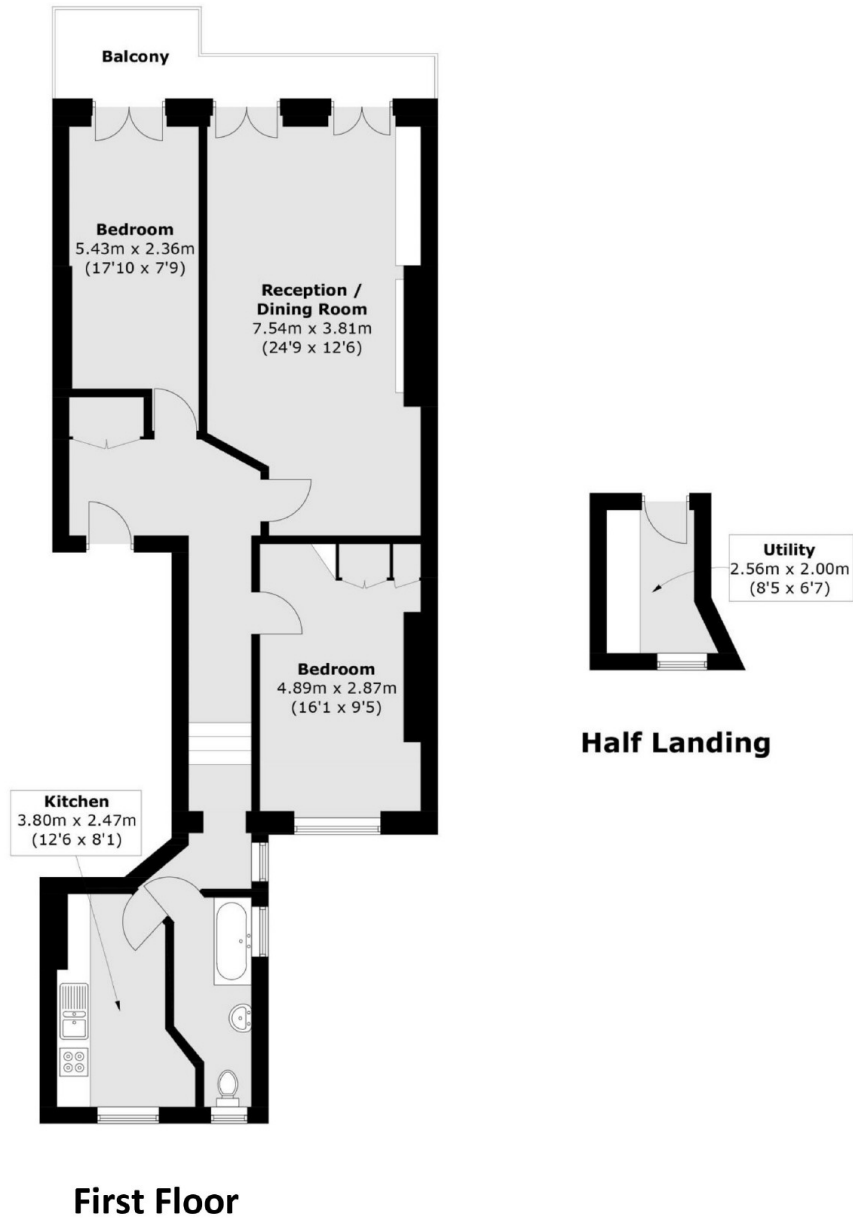
A large first floor two double bedroom apartment with wood flooring throughout. The property has a private balcony facing the communal gardens of Nevern Square and a separate utility/storage room for added space.

Nevern Square is located close to all shops, bars and restaurants of Earl's Court, while Earl's Court tube station (Piccadilly and District lines) is only 0.2 miles away.

Features

- Two Double Bedrooms
- Separate Kitchen
- Private Balcony
- Communal Garden
- Wood Flooring
- High Ceilings

Nevern Square, London, SW5



Total area (approx.): 87.4 sq. m (940.6 sq. ft)
Balcony area: 7.2 sq. m (77.5 sq. ft)