



Penywern Road, SW5

£750 Per week

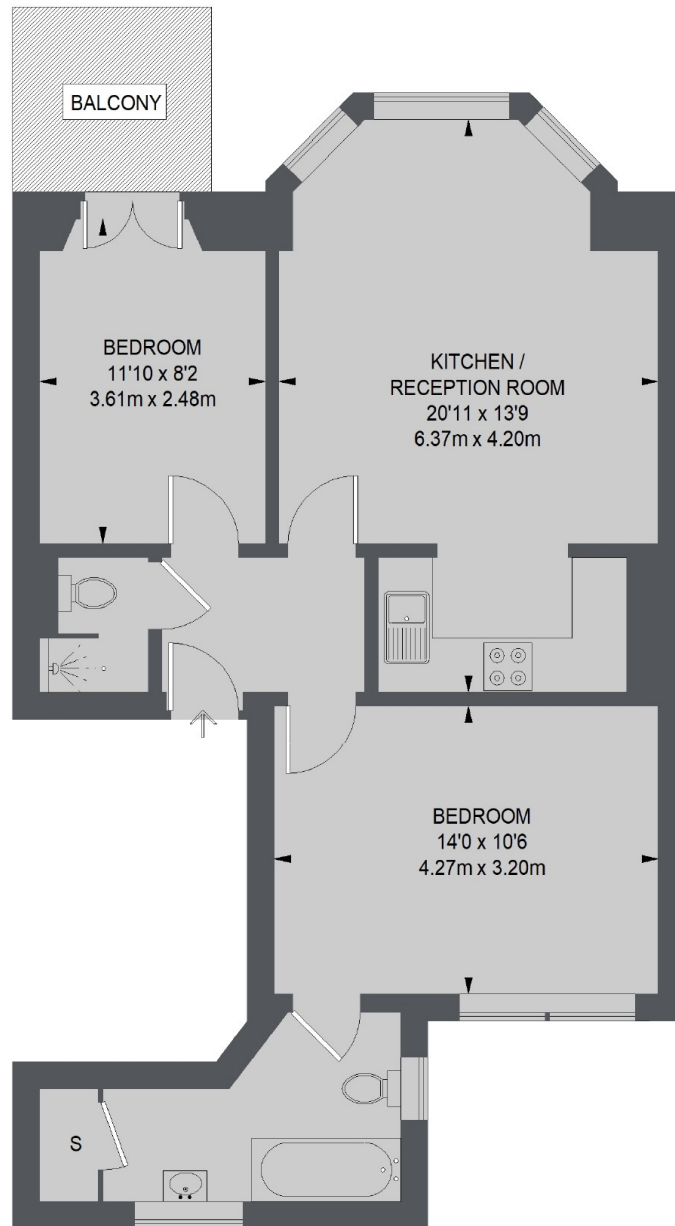
AVAILABLE IN SEPTEMBER - A recently refurbished two bedroom period conversion with a large open plan reception room, two generous double bedrooms, two bathrooms and a large private balcony.

Located in between Earl's Court Road and Warwick Road, this apartment is only 0.2 miles from Earl's Court tube station and all the shops bars and restaurants of Earl's Court itself.

Features

- Two Double Bedrooms
- Two Bathrooms
- Private Balcony
- Open Plan
- Modern
- First Floor

Penywern Road, London, SW5



FIRST FLOOR

TOTAL APPROX. FLOOR AREA 640 SQ. FT. (59.47 SQ. M.)