



## Bramham Gardens, SW5

£750 Per week

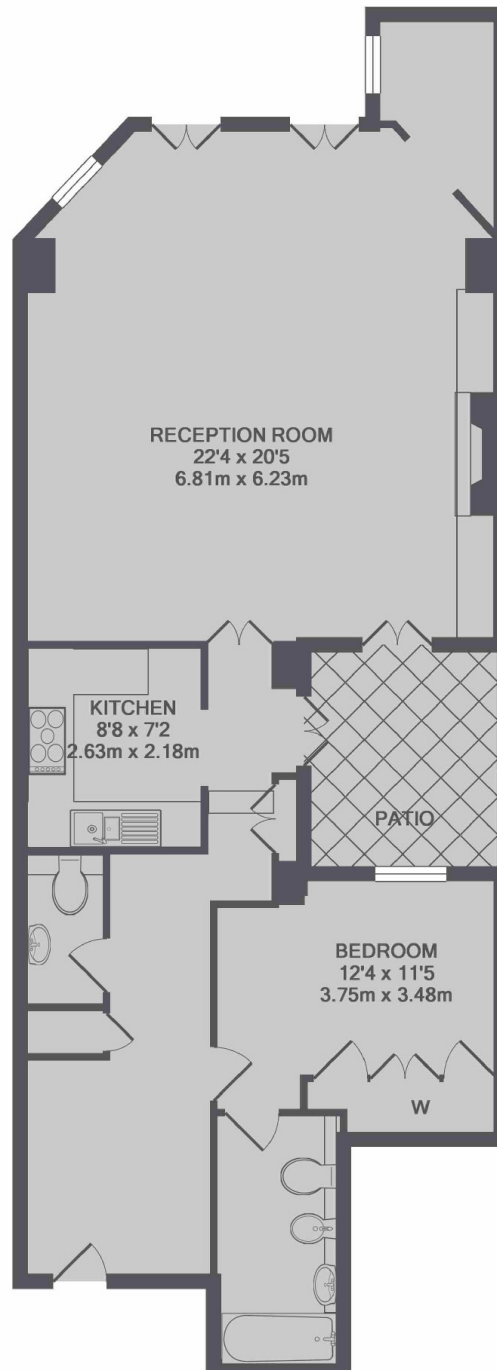
A beautiful, interior designed one double bedroom apartment with separate study area, and featuring an incredible reception room with LED mood lighting, internal patio and unique direct access to an award winning garden square.

The flat is located within a mile of Earls Court Road with Marks & Spencers simply foods and a Tesco supermarket. Gloucester Road and Earls Court Undergrounds provide links to the city via the Piccadilly and District line.

### Features

- Spacious Double Bedroom
- Private Patio
- Contemporary Finish
- Built-In Storage
- Separate Study Area
- Access To Communal Gardens

# Bramham Gardens, London, SW5



TOTAL APPROX. FLOOR AREA 936 SQ.FT. (87.0 SQ.M.)