



## Lexham Gardens, W8

£553 Per week

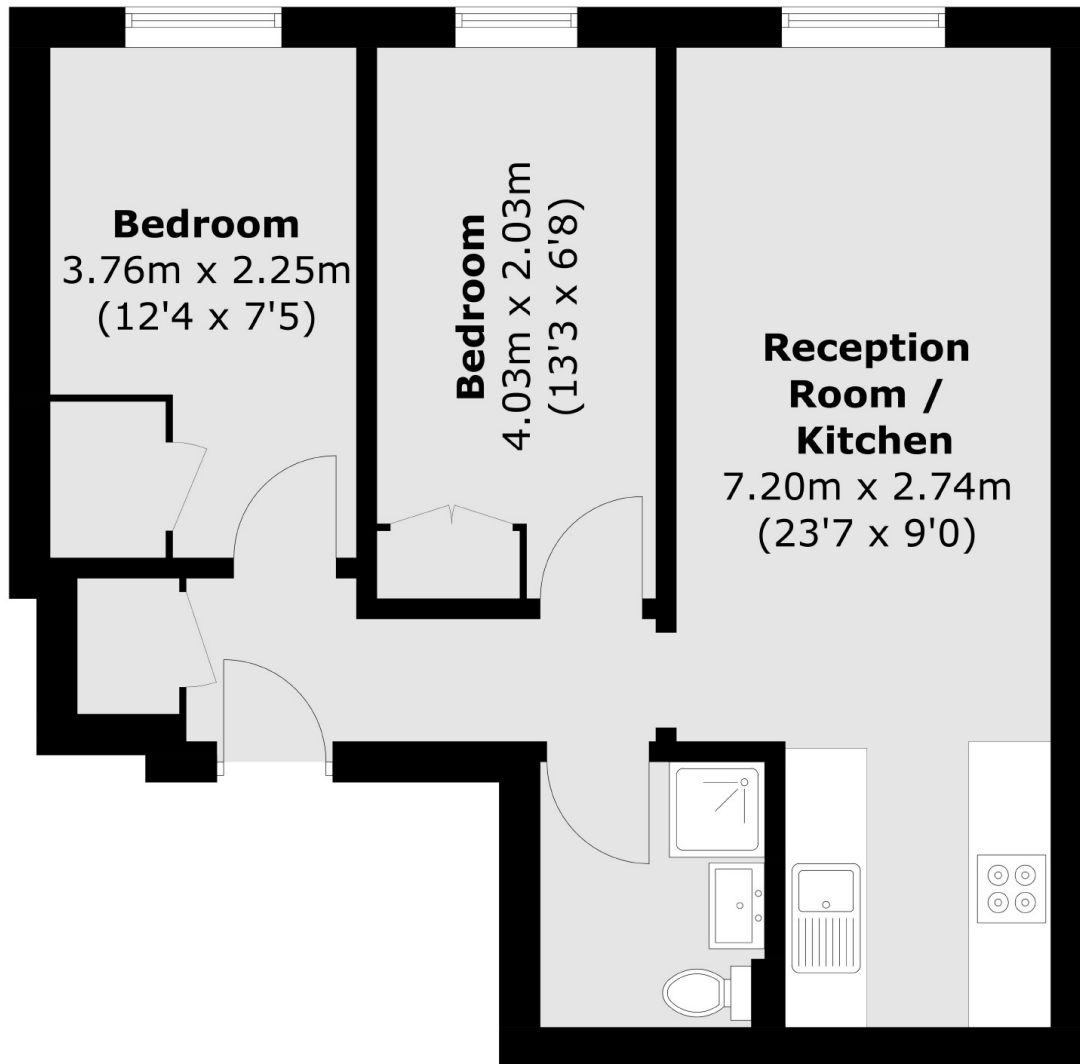
A two double bedroom apartment based on the highly desirable Lexham Gardens, Kensington. Benefits also include wood flooring throughout, high ceilings and a semi open-plan kitchen.

Lexham Gardens is located between Gloucester Road and Kensington High Street with a wide choice of shops and restaurants including Waitrose, Starbucks and Marks & Spencer's.

### Features

- Two Double Bedrooms
- Semi Open-plan Kitchen
- Wood Flooring Throughout
- High Ceilings
- Furnished
- Close to Amenities

# Lexham Gardens, London, W8



Total area (approx.): 45.0 sq. m (484.3 sq. ft)