



## Bolton Gardens, SW5

£923 Per week

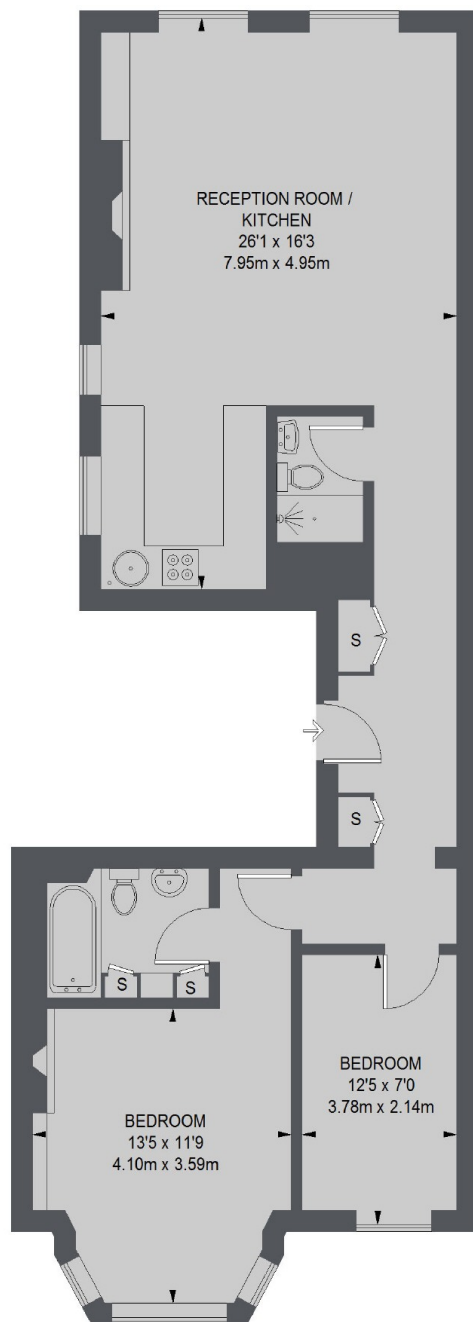
A fantastic two bedroom two bathroom property situated on the second floor of a Victorian conversion with ample storage and lots of natural light.

This flat is situated only a short walk to either Earls Court or Gloucester Road Underground Station, with a vast array of shops, cafés, restaurants and supermarkets on your doorstep.

### Features

- Two Double Bedrooms
- Two Bathrooms
- Semi Open-Plan Kitchen
- Wooden Flooring
- Close To Bousfield School
- Communal Gardens

# Bolton Gardens, London, SW5



**SECOND FLOOR**

TOTAL APPROX. FLOOR AREA 827 SQ. FT. (76.84 SQ. M.)