



Eardley Crescent, SW5

£692 Per week

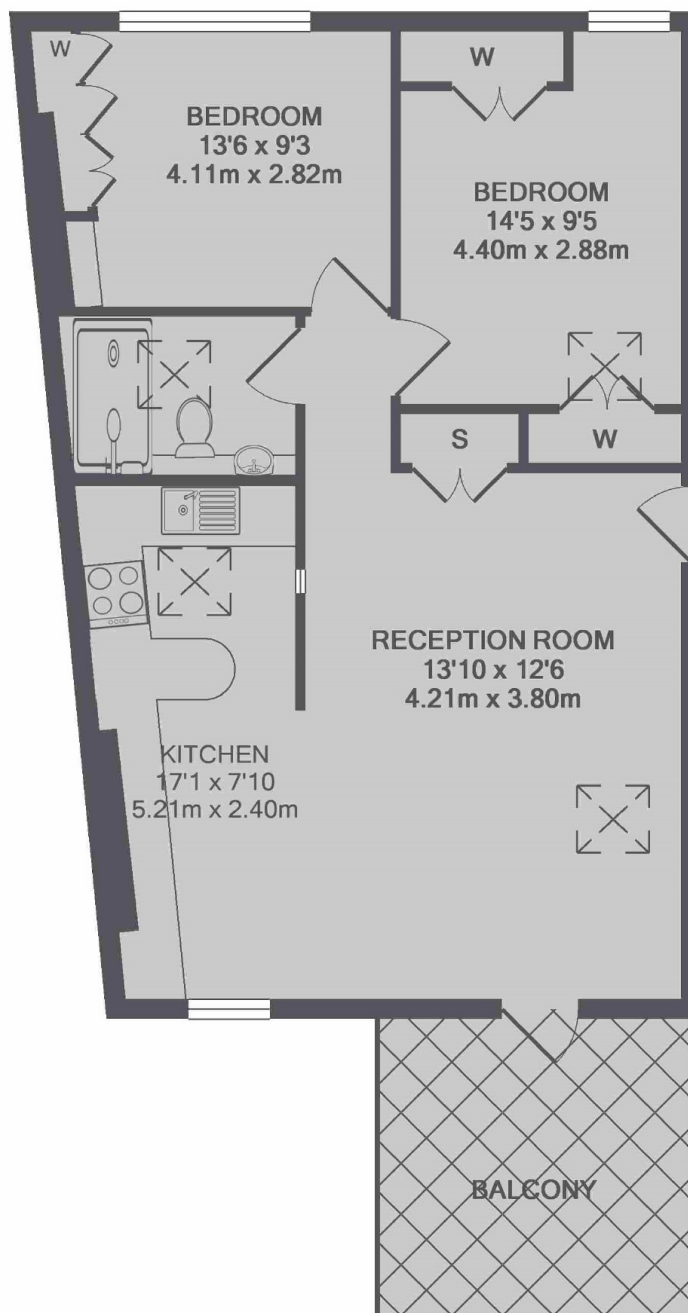
A two double bedroom apartment based on the top floor of a period conversion with built-in storage throughout. The property also benefits from a large south facing private terrace.

The flat is located close to the shops and cafes of Earls Court Road including Marks & Spencer Simply Foods, Starbucks coffee shop and a Tesco supermarket.

Features

- Two Double Bedrooms
- Private Terrace
- Third Floor
- Open Plan Kitchen
- Wood Floors
- Built-in Storage

Eardley Crescent, London, SW5



TOTAL APPROX. FLOOR AREA 644 SQ.FT. (59.8 SQ.M.)