



Logan Place, W8

£1,450 Per week

Dexters



Logan Place, W8

A rare opportunity to rent a four bedroom, two bathroom house with garage on the sought-after Logan Place, Kensington. Benefits also include a private patio garden and separate terrace. Recently repainted and brand new carpets.

Logan Place is located conveniently between High Street Kensington and Earls Court Road allowing access to many shops, boutiques, restaurants and supermarkets only a short walk away.

Features

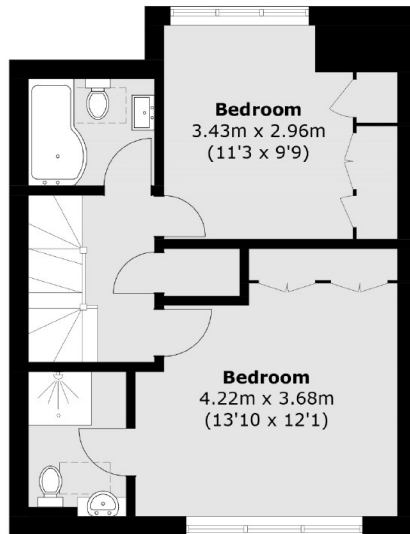
- Four Bedrooms
- Two Bathrooms & Extra WC
- Patio Garden & Terrace
- Garage
- Split Level
- Separate Kitchen



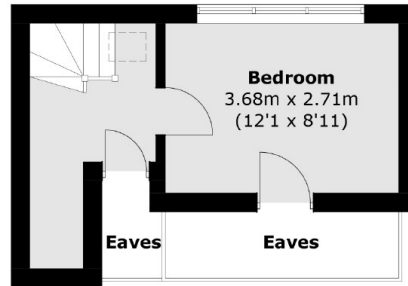




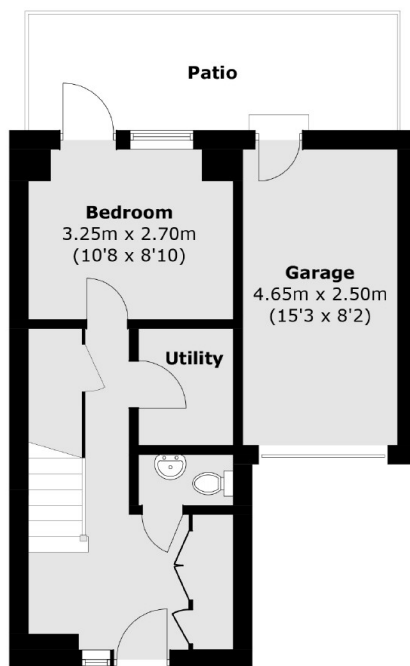
Logan Place, London, W8



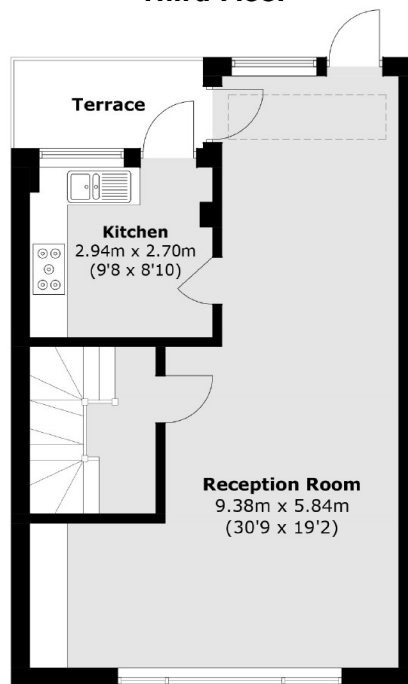
Second Floor



Third Floor



Ground Floor



First Floor

Total area (approx.): 137.2 sq. m (1,471.1 sq. ft)
(Excluding Eaves)

Garage (approx.): 11.6 sq. m (124.9 sq. ft)

Terrace (approx.): 4.2 sq. m (45.2 sq. ft)