



## Nevern Square, SW5

£692 Per week

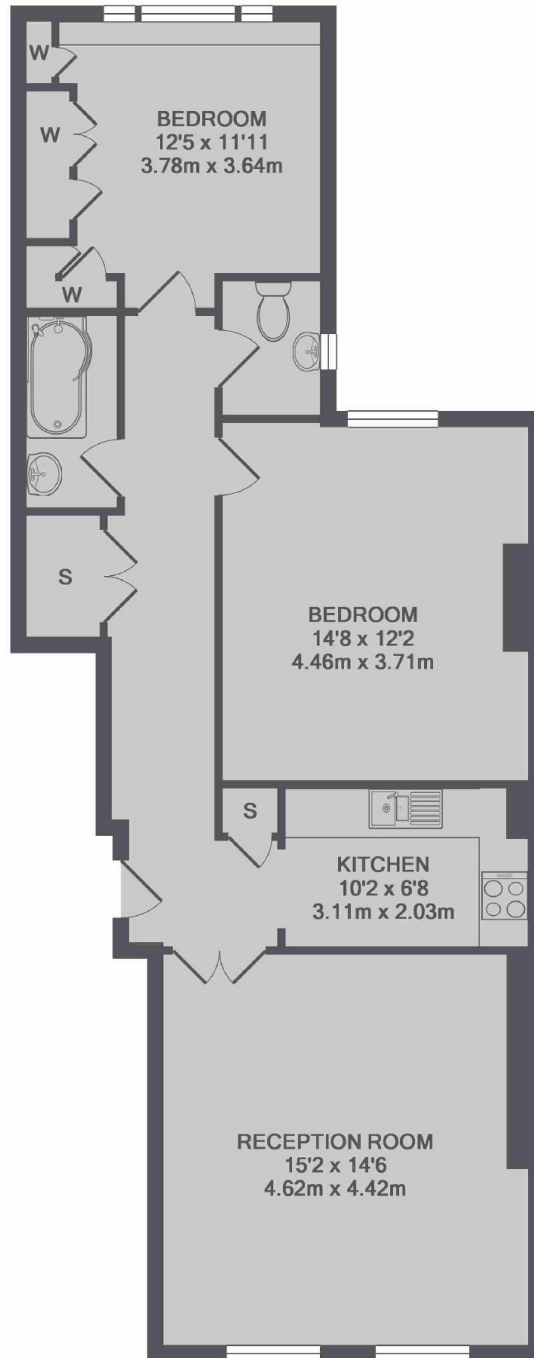
Situated on the raised ground floor overlooking the communal garden square, this extremely spacious two double bedroom apartment has the added benefit of a separate eat-in kitchen.

Arguably Earl's Courts premier garden square, Nevern Square is nestled quietly away from the hustle and bustle of Earls Court Road, whilst remaining comfortably within walking distance of the amenities and tube.

### Features

- Two Double Bedrooms
- High Ceilings
- Separate Kitchen
- Fitted Wardrobes
- Communal Garden
- Close to Transport

# Nevern Square, London, SW5



TOTAL APPROX. FLOOR AREA 844 SQ.FT. (78.4 SQ.M.)

**Dexters**

Earl's Court  
3 Hogarth Place  
London  
SW5 0QT

Lettings  
020 7370 3030

Energy Rating: E. We aim to make our particulars both accurate and reliable. However they are not guaranteed; nor do they form part of an offer or contract. If you require clarification on any points then please contact us, especially if you're traveling some distance to view. Please note that appliances and heating systems have not been tested and therefore no warranties can be given as to their good working order.

 **RICS** | Regulated  
Estate Agent  
and Letting Agent

[dexters.co.uk](http://dexters.co.uk)