

## Earls Court Road, SW5

£675 Per week

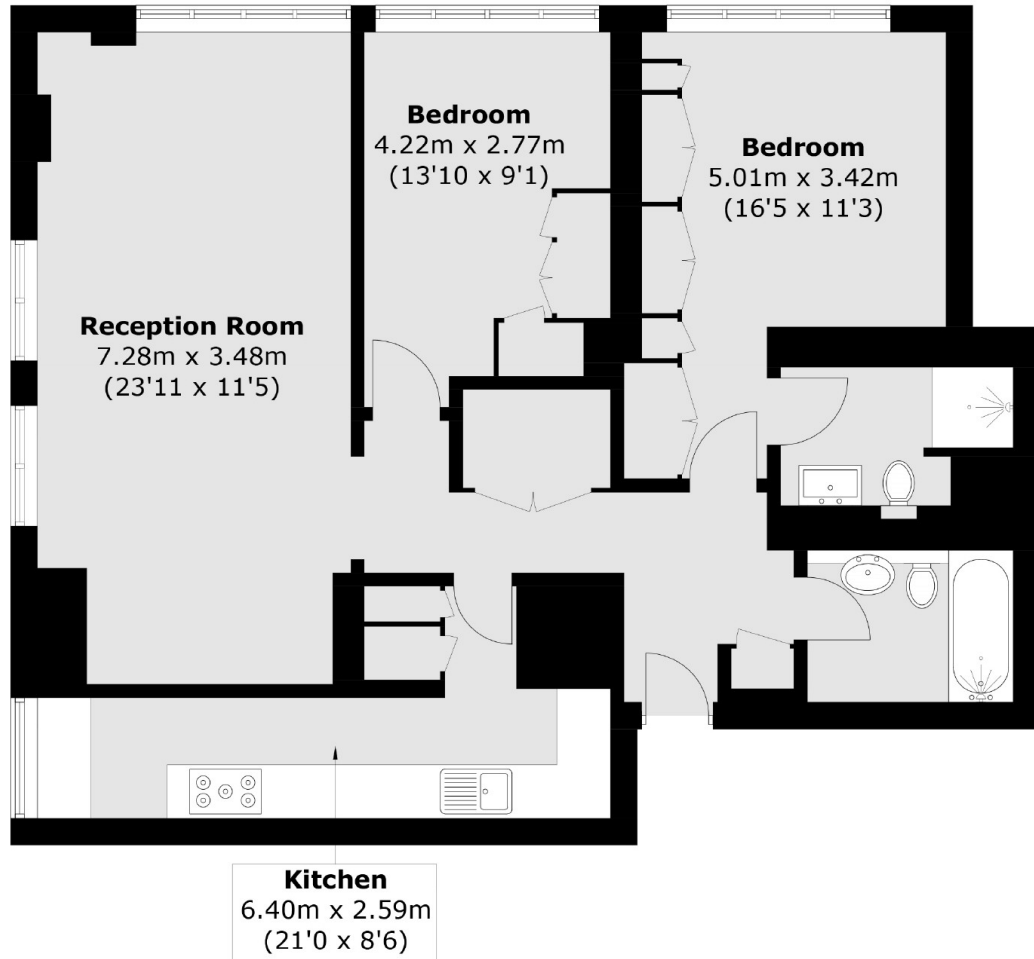
A newly refurbished two bedroom apartment on the first floor of a purpose built portered block, in the heart of Earls Court with wooden floors and lift access.

Sullivan Court can be accessed either via Earls Court Road or Redfield Lane. There are a wide selection of bus routes and the closest underground station is Earls Court.

### Features

- Two Double Bedrooms
- Two Bathrooms
- Wood Floors Throughout
- Brand New Refurb
- Separate Fitted Kitchen
- Porter

Earls Court Road,  
London, SW5



Total area (approx.): 87.4 sq. m (940.8 sq. ft)