



Cromwell Road, SW5

£2,077 Per week

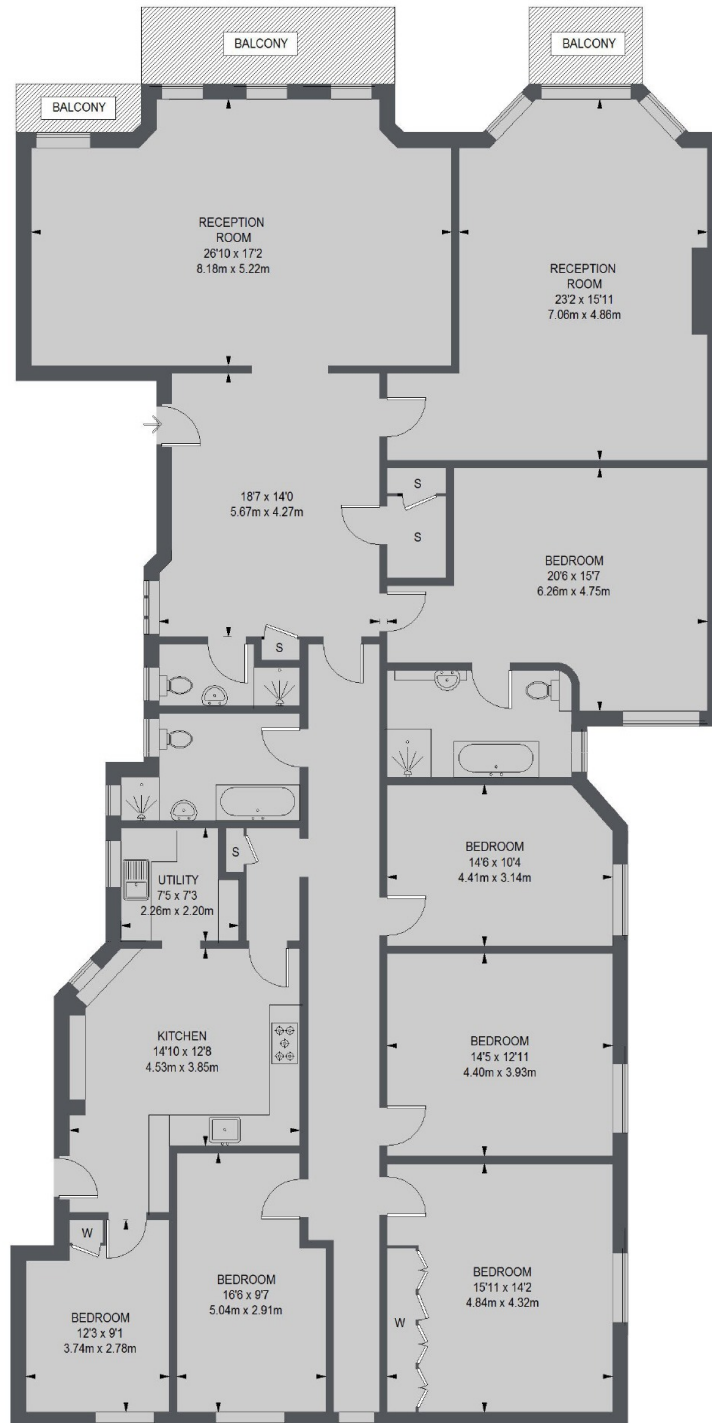
Grandeur and opulence are steeped throughout this lateral six bedroom flat with lift in a beautiful red brick mansion block. This flat is the perfect size and location for a family.

Cromwell Mansions is located in between Gloucester Road and Earls Court. Commuting to the city will be a breeze, whilst the Lycee School is within walking distance and Heathrow is just one tube line away.

Features

- Six Bedrooms
- Three Bathrooms
- Two Reception Rooms
- Third Floor
- Lift Access
- Wooden Flooring Throughout

Cromwell Road, London, SW5



TOTAL APPROX. FLOOR AREA 2957 SQ. FT. (274.7 SQ. M.)

Dexters

Earl's Court
3 Hogarth Place
London
SW5 0QT

Lettings
020 7370 3030

Energy Rating: D. We aim to make our particulars both accurate and reliable. However they are not guaranteed; nor do they form part of an offer or contract. If you require clarification on any points then please contact us, especially if you're traveling some distance to view. Please note that appliances and heating systems have not been tested and therefore no warranties can be given as to their good working order.

 **RICS** Regulated
Estate Agent
and Letting Agent

dexters.co.uk