



Bramham Gardens, SW5

£1,500 Per week

A grand two double bedroom, two bathroom, two reception apartment based within a red brick mansion block on Bramham Gardens. Benefits also include a separate kitchen, a private patio and access the communal residents garden.

Bramham Gardens is arguably the most sought-after garden square within SW5 and surrounding areas. Great transport links for both underground and overground makes this an ideal location.

Features

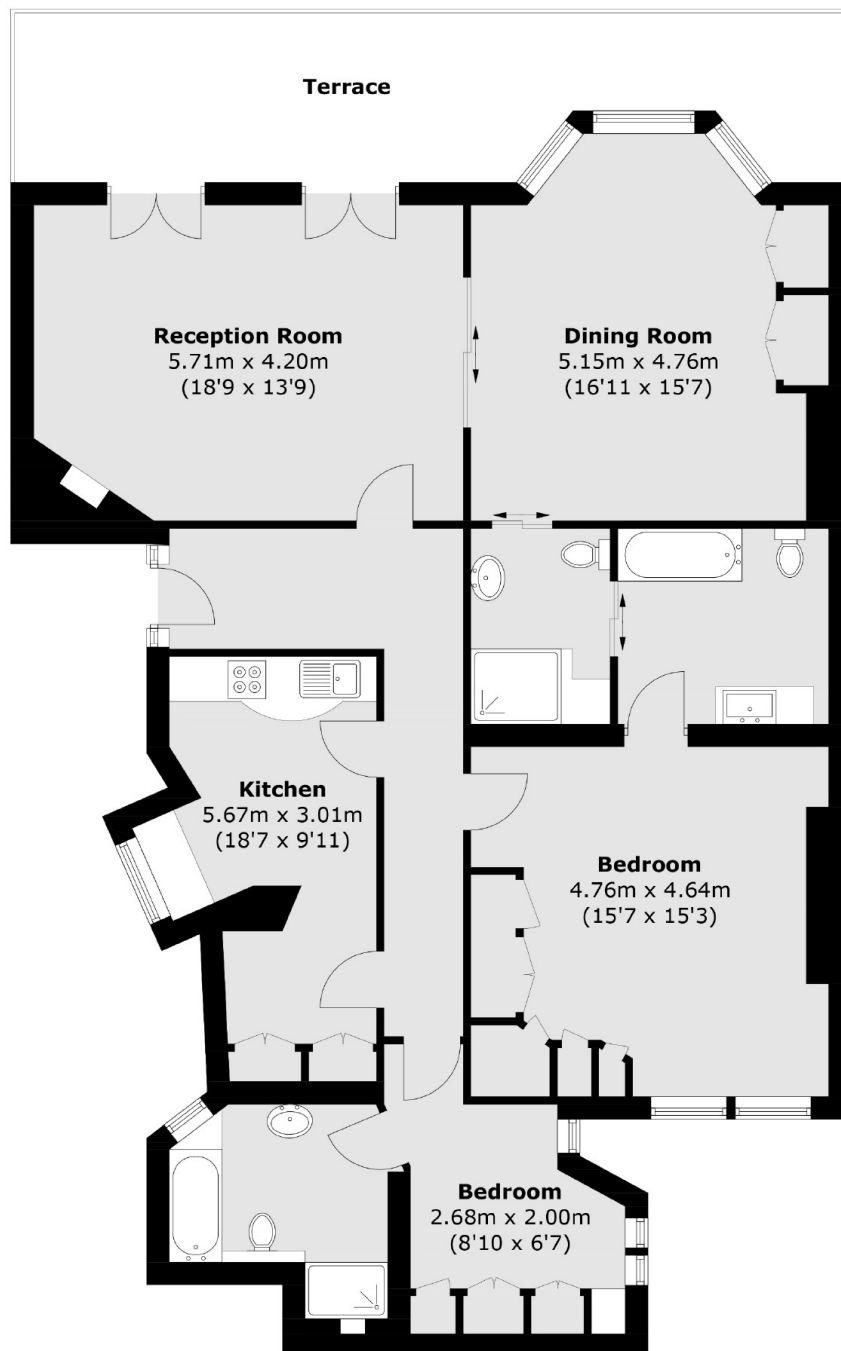
- Two Double Bedrooms
- Two Bathrooms
- Two Receptions
- Separate Kitchen
- Private Patio
- Communal Gardens



Bramham Gardens, SW5



Bramham Gardens, London, SW5



Total area (approx.): 127.6 sq. m (1,373.5 sq. ft)
Terrace (approx.): 22.3 sq. m (240 sq. ft)