

Queen's Club Gardens, W14

£1,900 Per calendar month

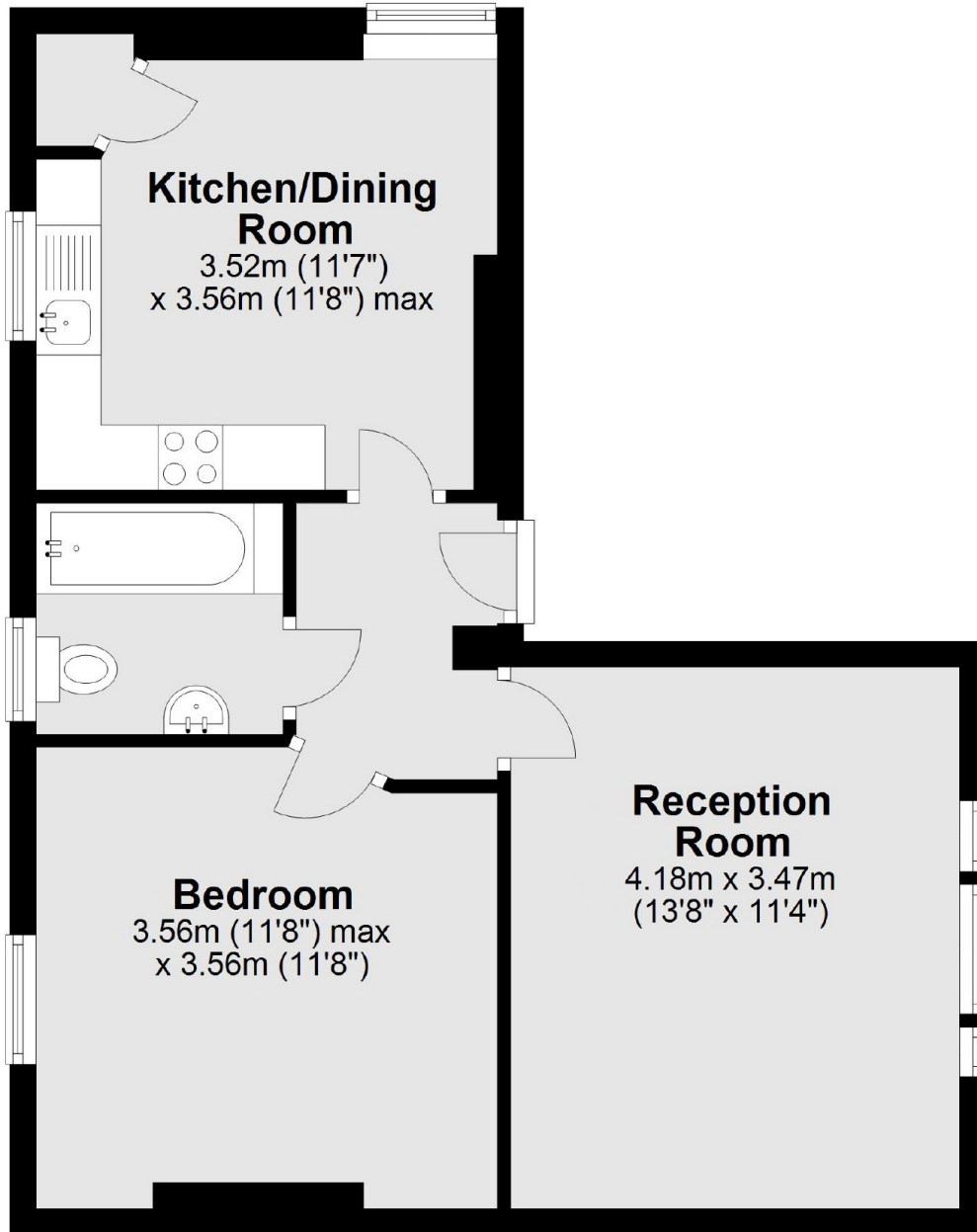
A superb one bedroom lower ground floor apartment in this ever popular Victorian Mansion block development benefiting from residents tennis courts and landscaped gardens.

Queen's Club Gardens is located just South off Queens Club and is close to either Barons Court or West Kensington underground stations and within a mile to the facilities in Fulham, Earls Court and Kensington.

Features

- One Bedroom
- Eat In Kitchen
- Tennis Court
- Close To Tube
- Communal Gardens
- Good Storage

Queen's Club Gardens,
London, W14



Total area: approx. 47.2 sq. metres (507.8 sq. feet)