



## Matheson Road, W14

### £450,000

A bright one bedroom apartment situated on the second floor of an attractive period building. The property comes with the share of freehold and no onward chain and is offered in excellent condition throughout.

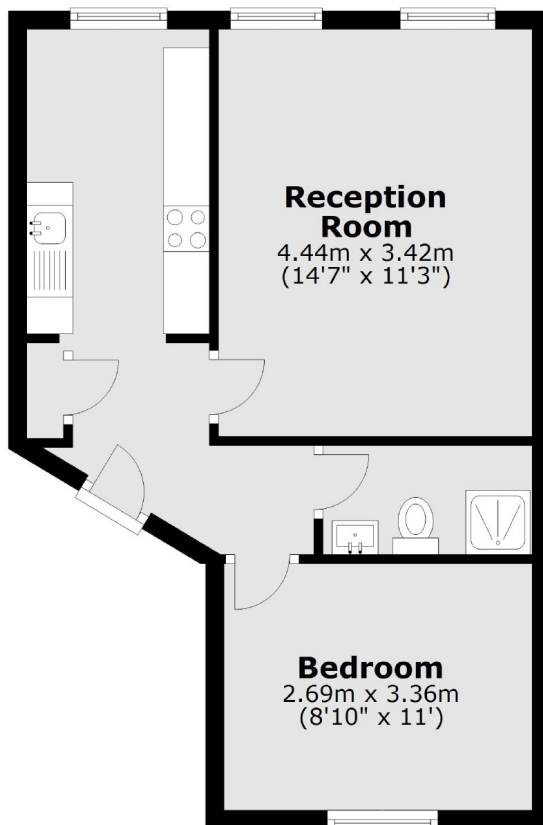
Matheson Road is moments away from all of the transport links, shops, cafés and restaurants that West Kensington, Olympia and Kensington High Street have to offer.

### Features

- One Bedroom
- Close To Tubes
- Second Floor
- Share Of Freehold
- No Chain
- Popular Location

Matheson Road,  
London, W14

## Second Floor



Total area: approx. 39.5 sq. metres (425.4 sq. feet)