



North End Road, W14

£2,250 Per calendar month

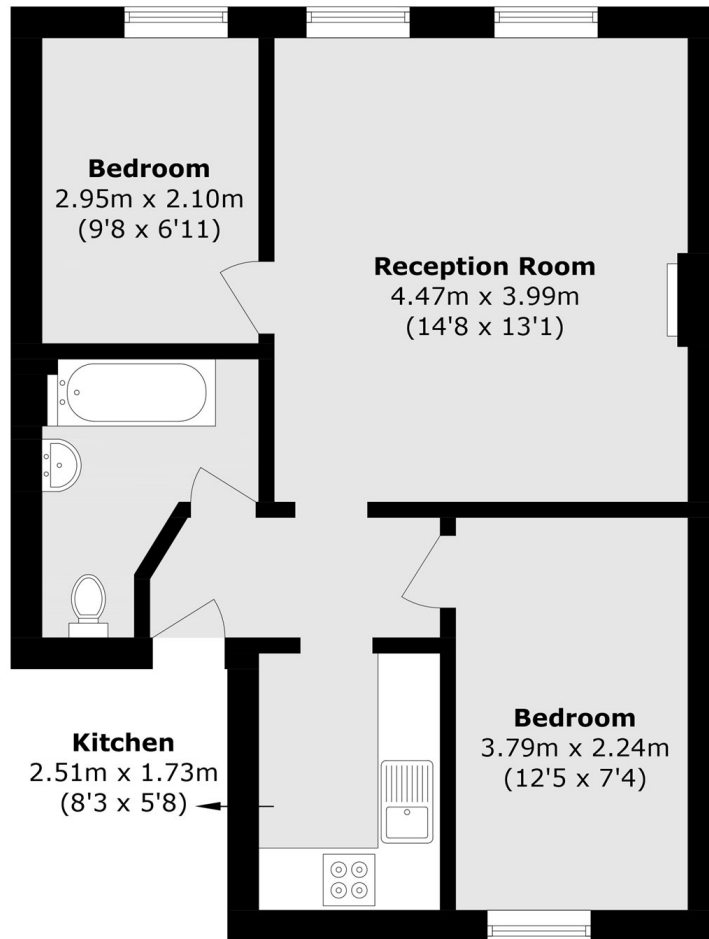
This two bedroom property on the top floor offering wood flooring, separate kitchen and fitted storage. Ideal for a professional couple or sharers.

This property is surrounded by shops, cafés and restaurants that West Kensington, Barons Court, Hammersmith and Kensington Olympia have to offer.

Features

- Two Bedrooms
- One Bathroom
- Wood Flooring
- Upper Floors
- Fitted Storage
- Separate Kitchen

North End Road,
London, W14



Total area (approx.): 46.9 sq. m (504.8 sq. ft)