

Barton Road, W14

£2,200 Per calendar month

This lovely two bedroom apartment is based in the heart of West Kensington. The property is finished to a very good standard throughout with high ceilings and family bathroom.

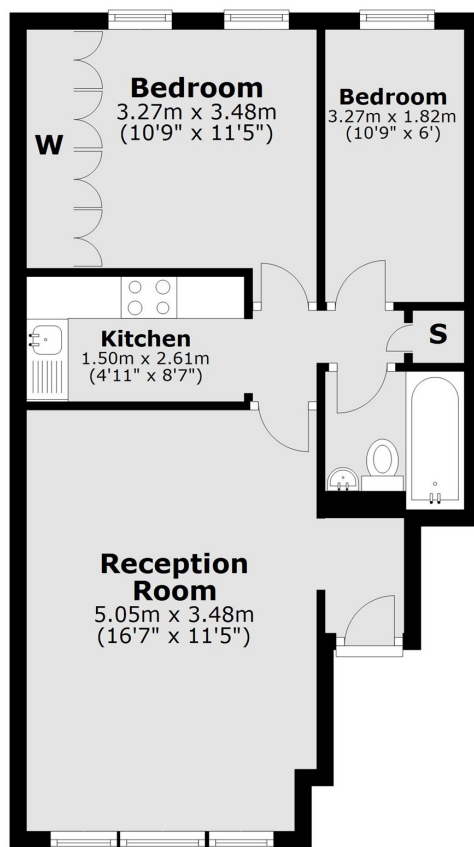
Barton Road is located close to the A4 for routes out of London, North End Road for a variety of bus routes and is ideal for the underground.

Features

Two Bedrooms
Managed by Dexters
Ground Floor
Two Bedrooms
Good Storage
Close To Tube

Barton Road,
London, W14

Raised Ground Floor



Total area: approx. 45.0 sq. metres (484.8 sq. feet)