



## Queen's Club Gardens, W14

£630,000

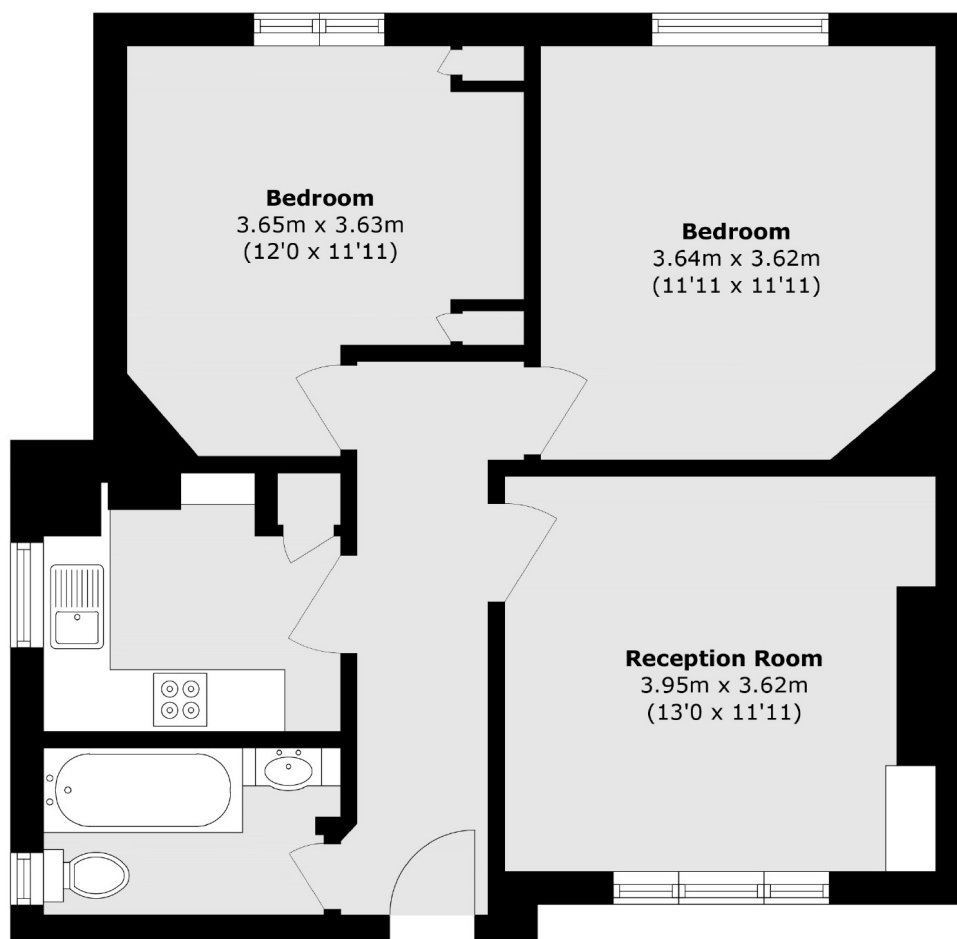
A bright two bedroom apartment situated in the popular Queens Club Gardens development. The property is situated on the second floor with views of the communal gardens and tennis courts. Its comes with a 999 year lease, no chain and is in good condition throughout.

Queen's Club Gardens is located adjacent to the Queen's Club tennis, close to shops, cafes, bars and restaurants and is only a short walk to Barons Court and West Kensington underground stations.

### Features

- 999 Year Lease
- Two Bedrooms
- No Chain
- Communal Gardens
- Second Floor
- Close To Tubes

# Queen's Club Gardens, London, W14



Total area (approx.): 60.4 sq. m (650.1 sq. ft)

## Dexters

West Kensington  
179-181 North End Road  
London  
W14 9NL  
Sales  
020 7381 6381

Energy Rating: C. We aim to make our particulars both accurate and reliable. However they are not guaranteed; nor do they form part of an offer or contract. If you require clarification on any points then please contact us, especially if you're traveling some distance to view. Please note that appliances and heating systems have not been tested and therefore no warranties can be given as to their good working order.

 **RICS** | Regulated  
Estate Agent  
and Letting Agent

[dexters.co.uk](https://www.dexters.co.uk)