



Earsby Street, W14

£3,250 Per calendar month

A large two bedroom apartment situated in a highly desirable mansion development. This property is finished to a high specification through-out with a beautiful kitchen, spacious reception room and bathroom.

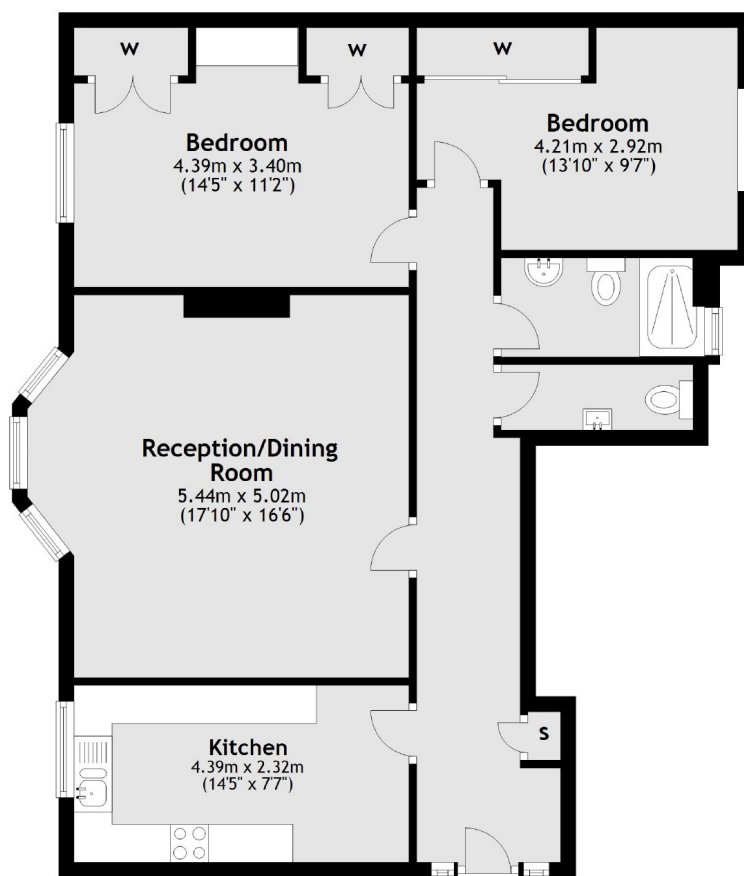
Palace Mansions is within walking distance of Westfield Shopping Centre and Kensington High Street. Within half a mile of three stations: Kensington Olympia, West Kensington and Barons Court.

Features

- Two Bedrooms
- One Bathroom
- Wood Flooring
- Fitted Storage
- Separate Kitchen
- Concierge Service

Earsby Street,
London, W14

Ground Floor



Total area: approx. 80.1 sq. metres (861.9 sq. feet)

Dexters

West Kensington
179-181 North End Road
London
W14 9NL
Lettings
020 7381 4133

Energy Rating: D. We aim to make our particulars both accurate and reliable. However they are not guaranteed; nor do they form part of an offer or contract. If you require clarification on any points then please contact us, especially if you're traveling some distance to view. Please note that appliances and heating systems have not been tested and therefore no warranties can be given as to their good working order.

 **RICS** | Regulated
Estate Agent
and Letting Agent

dexters.co.uk