



Greyhound Road, W6

£525,000

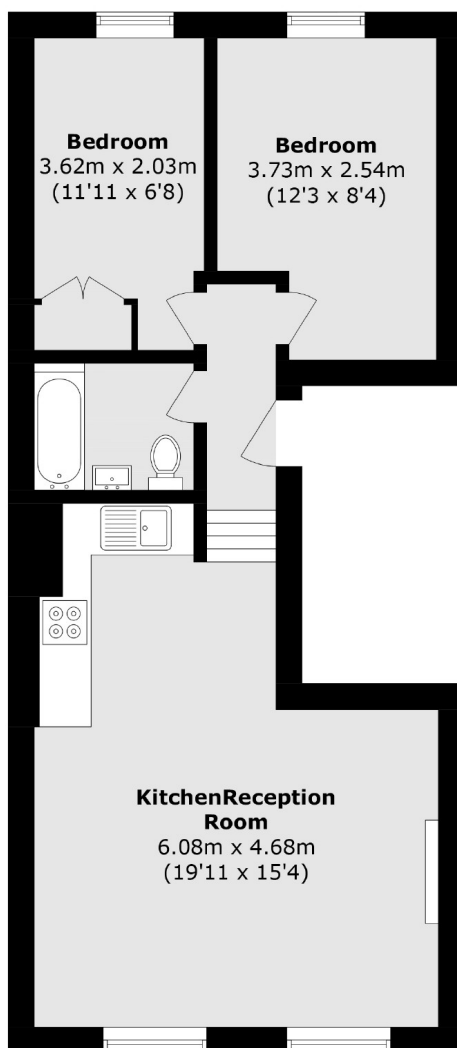
Set within a Victorian period conversion is this bright and airy two bedroom apartment offering a large open plan living/ kitchen area and a modern bathroom.

This property is situated in a popular residential location close to Barons Court and West Kensington station and on the doorstep to the famous Queens Tennis Club. You have a fantastic choice of local pubs, restaurants and independent shops and the River Thames close by.

Features

- Two Bedroom
- Leasehold
- Modern Bathroom
- Close To River Thames
- Natural Light
- Open Plan Living

Greyhound Road, London, W6



Total area (approx.): 45.9 sq. m (494 sq. ft)