



Matheson Road, W14

£650,000

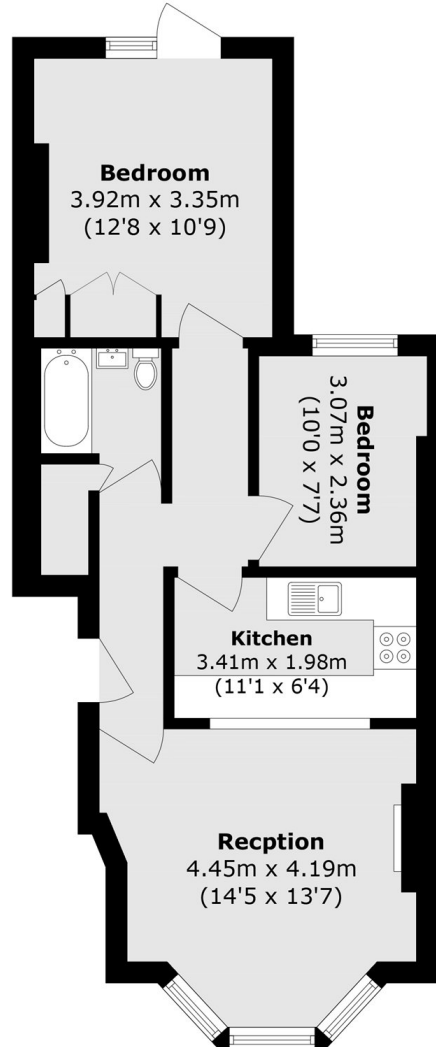
A popular two bedroom property situated on the ground floor with a large private garden. The property is in great condition throughout offering superb natural light, a semi open plan living space and kitchen, two double rooms and direct access to a patio garden.

Matheson Road is moments away from all of the transport links, shops, cafés and restaurants that West Kensington, Olympia and Kensington High Street have to offer.

Features

- Share Of Freehold
- No Chain
- Excellent Transport Links
- Popular Area
- Ground Floor
- Two Bedrooms

Matheson Road, London, W14



Total area (approx.): 55.7 sq. m (599.5 sq. ft)